



## VILLAGE OF KIMBERLY

426 W. Kimberly Avenue  
Kimberly, WI 54136

**Allyn Dannhoff**  
DIRECTOR OF OPERATIONS  
920-788-7507  
[adannhoff@vokimberly.org](mailto:adannhoff@vokimberly.org)

July 30, 2021

### RE: Railroad St./Creekview Ln. Paving to Commence Soon

Dear Village of Kimberly or Town of Buchanan Resident;

The project contractor has informed the Village and Town, pending conditions experienced, paving is planned to commence the week of August 9<sup>th</sup>. Vehicular access will experience varying restrictions and limitations once paving activities commence. No travel on or across pavement will be allowed for the 7-10 day paving set-up and cure time. Vehicular access into individual driveways will also be prohibited during the 7-10 day paving set-up and cure time for curb and gutter, sidewalk, driveway apron and private driveway sections. **Residents should make plans to park vehicles and trailers at an alternate location prior to 6:30 am, Monday morning, August 9<sup>th</sup>.**

The contractor has projected the following schedule, please reference the enclosed map:

**Phase 1 - week of August 9<sup>th</sup>:** Pave the east side of Railroad St. and south side of Creekview Ln.

- Local vehicular travel will be restricted during construction hours due to conflicts with construction equipment and activities. During non-construction hours the gravel lanes will be open to local traffic, however access to driveways on the paved side will not be allowed.
- **Intersections:**
  - **Van Roy Rd.** – Access using the west gravel lane of Railroad St. from County Hwy CE will be maintained.
  - **Better Way** – two lane access using the west gravel lane of Railroad St. will be maintained from County Hwy CE.
  - **Dons Dr.** – Access using the gravel lane of Creekview Ln. and Railroad St. will be maintained. Vehicles will not be able to cross the south paved lane of Creekview Ln.
  - Vehicular travel through the intersections with **Albert Way, Pats Dr., and Pinecrest Blvd.** will not be permissible as the paving will run through these intersections when poured.
- Residents on the paved side of these streets will not have access into their driveways.
- No street parking will be allowed.

**Phase 2 – week of August 16<sup>th</sup>:** Pave the west side of Railroad St. and north side of Creekview Ln., including the curb & gutter on this side. Also pave the curb & gutter on the east side of Railroad St. and south side of Creekview Ln. between Albert Way and Pinecrest Blvd.

- Local vehicular travel and access will allowed on the side of the street paved in Phase 1.
- **Intersections:**
  - **Van Roy Rd.** – No access from Railroad St. to Van Roy Rd. will be available until this pavement has cured.
  - **Better Way** – two lane access using the east paved lane of Railroad St. will be maintained from County Hwy CE to Better Way.
  - **Dons Dr.** – Access by crossing this intersection from Pats Dr. will be provided. No access using the east or west lanes of Creekview Ln. will be available until the north lane is cured.
  - Vehicular travel through the intersections with **Albert Way, Pats Dr., and Pinecrest Blvd.** will not be permissible as the paving will run through these intersections when poured.
- No street parking will be allowed.

**Phase 3 – Starting week of August 23<sup>rd</sup> and continuing until paving is complete:** Commence paving the intersections at Don’s Drive, Better Way, and Van Roy Rd. Through traffic will be maintained for Don’s Dr. and Better Way. Van Roy Rd. will not have access from Railroad St. Paving will also commence for sidewalks, driveway aprons, and driveway sections.

- Local vehicular travel on Railroad St. and Creekview Ln. and street parking will be restored with periodic restrictions as necessitated by construction activities. However access into driveways will not be permitted until sidewalk, driveway apron and driveway pavement to individual properties has cured.

## FREQUENTLY ASKED QUESTIONS (FAQs)

### Will vehicular access to my residence or business be maintained?

1. **Driveway access limited during paving.** Recognizing access to each driveway will be impacted by curing concrete, all residents are encouraged to identify alternate off-site parking opportunities in advance. On-street parking will not be allowed on Creekview Ln. and Railroad St. until all mainline and curb & gutter paving is complete and cured.
2. **Sidewalk, Driveway, and Apron paving.** Vehicular access to individual driveways will also be limited when sidewalk, driveway apron, and driveway sections are poured to allow the concrete to cure. However, street parking will be allowed during this time as the full width of the street should be open by this point in construction.
3. **How will I know when I can start driving on my driveway?** The contractor will place some form of barricade across the driveway apron, such as orange barrels, cones or stakes with a string across the driveway. The contractor will remove the barricade when it is acceptable to proceed with vehicular access.
4. **Emergency Services:** Fire, Police, Sheriff, and Emergency Medical Services have been notified so they may adjust any response plans accordingly.

**Vehicles, Boats, Campers, Trailers.** It is recommended to store any of these items you desire to use at an alternate location until the street is re-opened and all concrete for your driveway, apron, and sidewalk (for those with sidewalk) has been provided time to cure.

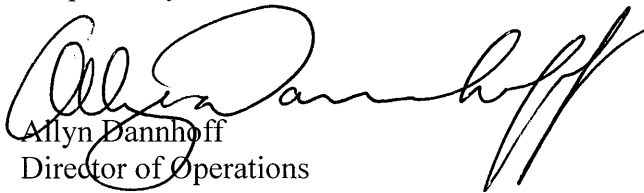
**Garbage and Recycling Pick Up.** Please continue placing your Garbage and Recycling Carts in the vicinity of where your driveway meets the road by 6 am on your regular collection dates.

The Village and Town will coordinate collection. **Bulk Item and Yard Waste collection services** will be maintained as normally scheduled for each community. Please place these items in the same vicinity as customarily placed for each community.

**Mail Delivery.** Temporary mailboxes will continue to be maintained. When the contractor has reinstalled the mailboxes along Railroad St. and Creekview Ln., the Post Office will resume regular delivery.

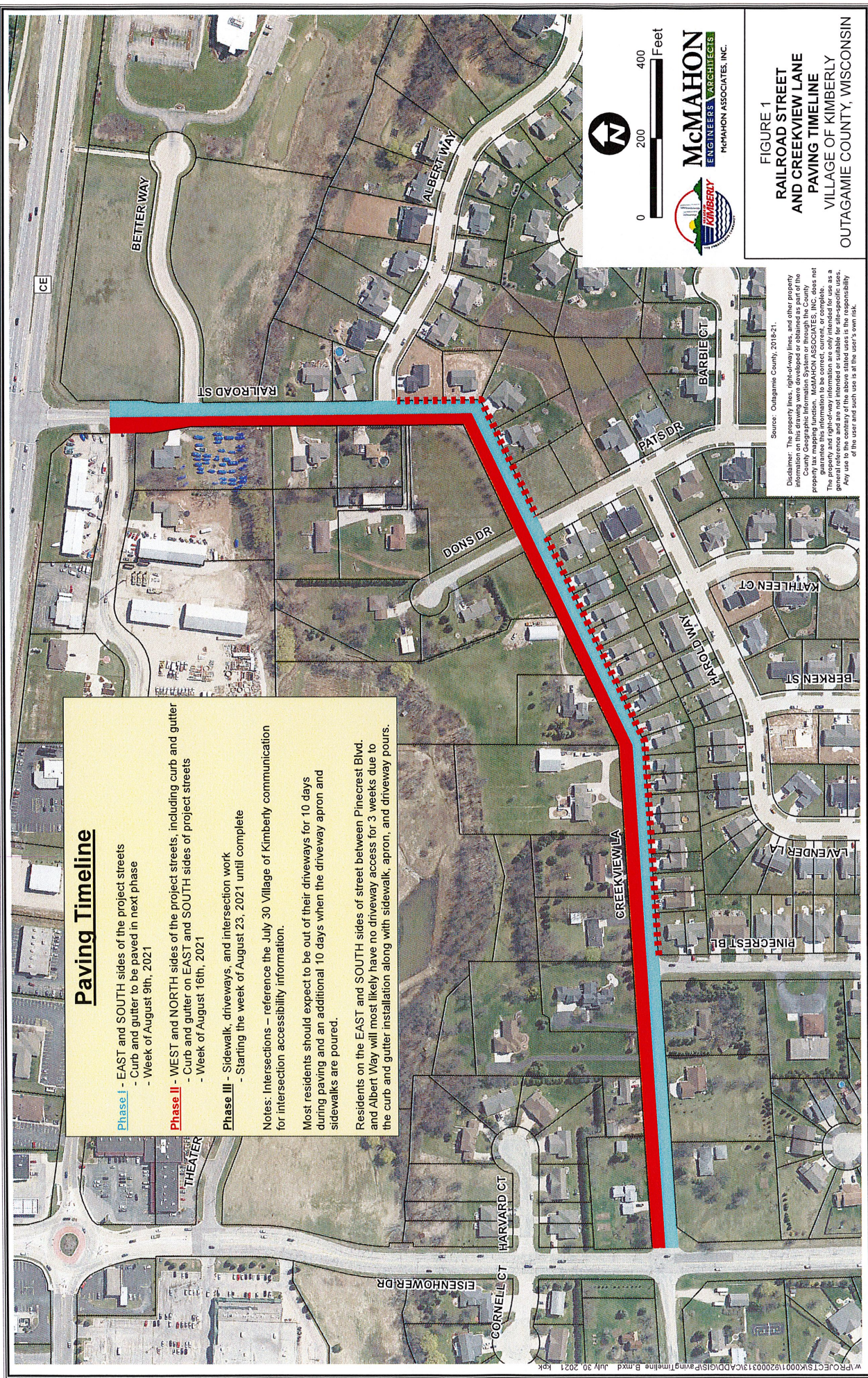
If you have questions not answered by the FAQs, please do not hesitate to call. Thank you in advance for your patience, understanding, and cooperation.

Respectfully;

  
Allyn Dannhoff  
Director of Operations

Attachment: Paving Timeline Map

cc: Danielle Block, Village Administrator  
Maggie Mahoney, Town Administrator  
Brad Werner, Village of Kimberly, Project Engineer



### Paving Timeline

**Phase I** - EAST and SOUTH sides of the project streets  
 - Curb and gutter to be paved in next phase  
 - Week of August 9th, 2021

**Phase II** - WEST and NORTH sides of the project streets, including curb and gutter  
 - Curb and gutter on EAST and SOUTH sides of project streets  
 - Week of August 16th, 2021

**Phase III** - Sidewalk, driveways, and intersection work  
 - Starting the week of August 23, 2021 until complete

**Notes:** Intersections – reference the July 30 Village of Kimberly communication for intersection accessibility information.  
 Most residents should expect to be out of their driveways for 10 days during paving and an additional 10 days when the driveway apron and sidewalks are poured.  
 Residents on the EAST and SOUTH sides of street between Pinecrest Blvd. and Albert Way will most likely have no driveway access for 3 weeks due to the curb and gutter installation along with sidewalk, apron, and driveway pours.

0 200 400 Feet

**McMAHON**  
 ENGINEERS ARCHITECTS  
KIMBERLY VILLAGE ASSOCIATES, INC.

**FIGURE 1**  
**RAILROAD STREET**  
**AND CREEKVIEW LANE**  
**PAVING TIMELINE**  
 VILLAGE OF KIMBERLY  
 OUTAGAMIE COUNTY, WISCONSIN

Source: Outagamie County, 2018-21.  
 Disclaimer: The property lines, right-of-way lines, and other property information shown on this map are derived from the County Geographic Information System or through the County property tax mapping function. McMAHON ASSOCIATES, INC. does not guarantee the accuracy of the information shown on this map. The information shown on this map is for general reference only and should not be used as a general reference and are not intended or suitable for site-specific uses. Any use to the contrary of the above stated uses is the responsibility of the user and such use is at the user's own risk.