

CONSTRUCTION DRAWINGS FOR CTH N STORM WATER MANAGEMENT FACILITY YARD WASTE TRANSFER SITE CONSTRUCTION

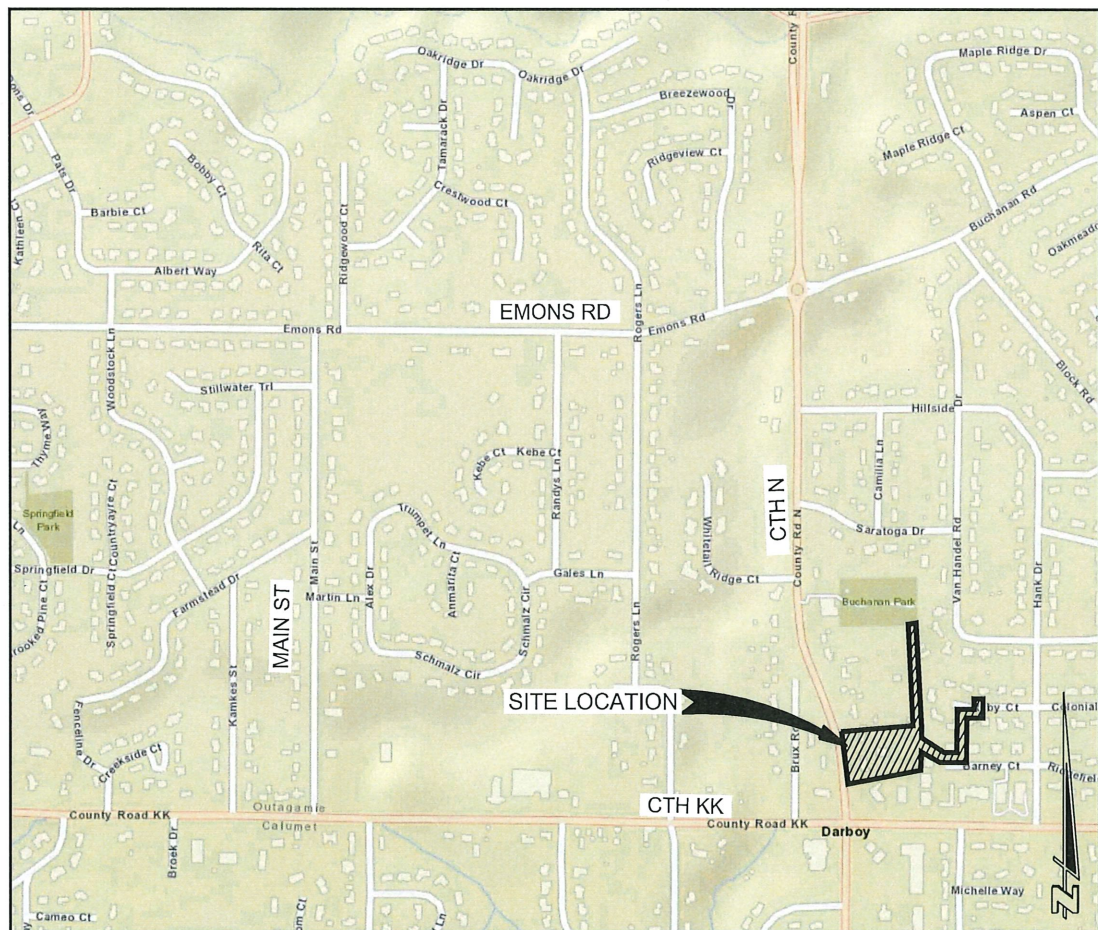
CONTRACT NO. B-21
TOWN OF BUCHANAN
OUTAGAMIE COUNTY, WI

SEPTEMBER, 2021

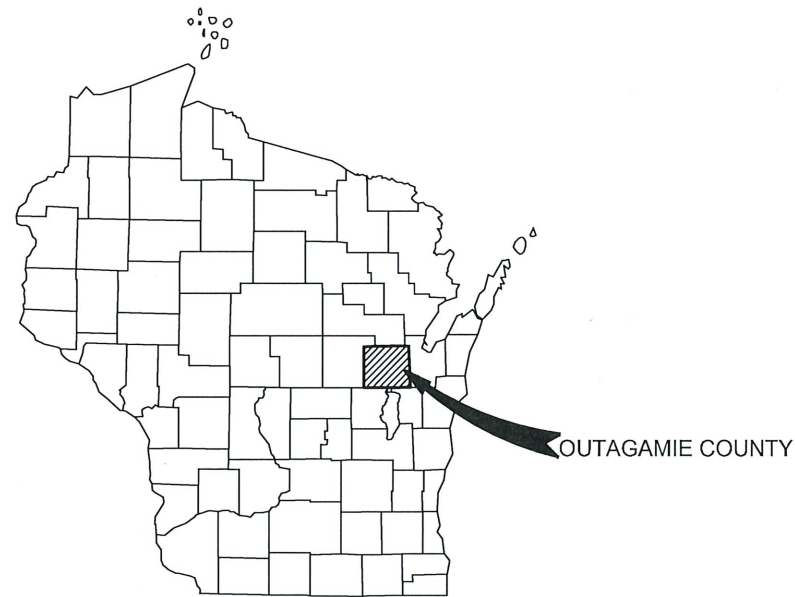
Prepared By



PROJECT I.D. 04916-0095/0100



SITE LOCATION MAP

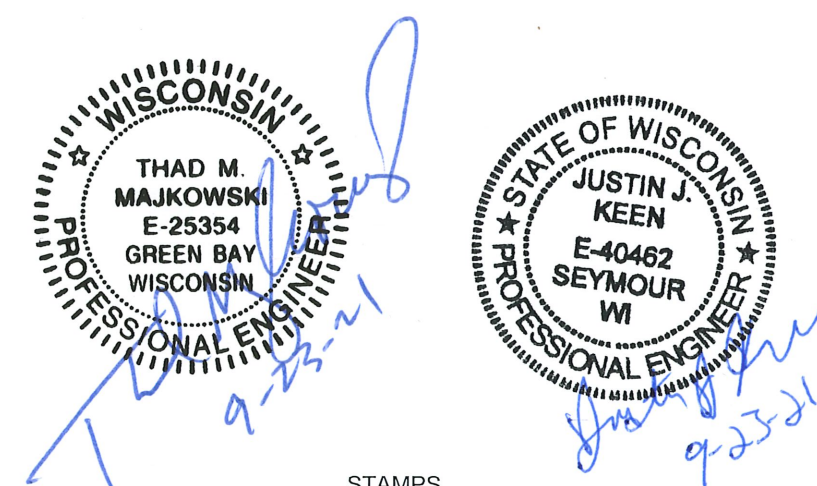


COUNTY LOCATION MAP

ATTENTION:
DOWNLOADED PLANS ARE NOT SCALABLE, NEITHER THE OWNER NOR THE ENGINEER SHALL BE HELD RESPONSIBLE FOR THE SCALE OR PRINT QUALITY OF DOWNLOADED PLANS. ONLY PRINTED PLANS FROM CEDAR CORPORATION SHALL BE CONSIDERED TO BE SCALEABLE PLANS.

INDEX TO DRAWINGS

SHEET NO.	DESCRIPTION
1	TITLE SHEET
2	STANDARD SYMBOLS ABBREVIATIONS & STAMPS
3	TRAFFIC CONTROL AND ACCESS PLAN
4	YARD WASTE AND POND EXISTING CONDITIONS
5	YARD WASTE AND POND REMOVAL PLAN
6	YARD WASTE AND POND SITE PLAN
7	YARD WASTE AND POND GRADING & EROSION CONTROL PLAN
8	YARD WASTE AND POND CROSS SECTIONS
9 - 10	STORM SEWER OUTFALL PLAN AND PROFILE
11 - 12	BARNEY COURT STORM SEWER EASEMENT PLAN AND PROFILE
13	RUBY COURT STORM SEWER EASEMENT PLAN AND PROFILE
14 - 18	STANDARD DETAILS



STAMPS

I:\Clients-CR\B4916 Buchanan Town of\095 N130 CTH N Property - Storm Water Management Feasibility Study\100 Cad\DWG\CoverDetails.dwg 09/23/21 9:25:42 AM

MAPPING & TOPOGRAPHY SYMBOLOGY

DESCRIPTION	EXISTING SYMBOL	PROPOSED SYMBOL
SANITARY SEWER (PLAN) - LENGTH-DIA. MATERIAL @ GRADE	(SIZE & MAT'L.) SAN	LENGTH - SIZE MATL SAN
STORM SEWER (PLAN) - LENGTH-DIA. MATERIAL @ GRADE	(SIZE & MAT'L.) STM	LENGTH - SIZE MATL STM
WATER MAIN (PLAN)- LENGTH-DIA. MATERIAL-(FITTING-FITTING)	(SIZE & MAT'L.) WTR	LENGTH - SIZE MATL WTR
SANITARY SEWER (PROFILE) - LENGTH-DIA. MATERIAL @ GRADE	(SIZE & MAT'L.)	XXX'- XX" PVC SAN @ 0.00%
SANITARY FORCEMAIN (PROFILE) - DIA. MATERIAL	(SIZE & MAT'L.)	XXX'- XX" FORCEMAIN @ 0.00%
STORM SEWER (PROFILE) - LENGTH-DIA. MATERIAL @ GRADE	(SIZE & MAT'L.)	XXX'- XX" RCP STM @ 0.00%
WATER MAIN (PROFILE)- DIA. MATERIAL	(SIZE & MAT'L.)	X" PVC WM.
GAS MAIN	GAS	GAS
ELECTRIC - BURIED	UGE	UGE
ELECTRIC - OVERHEAD	OE	OE
TELEPHONE - BURIED	TEL	TEL
TELEPHONE - BURIED (FIBER OPTIC)	FO	FO
TELEPHONE - OVERHEAD	OH	OH
CABLE TELEVISION - BURIED	TV	TV
CABLE TELEVISION - OVERHEAD	OH	OH
CENTERLINE		
RIGHT-OF-WAY LINE		
PROPERTY LINE		
PAVEMENT (STREET, DRIVE, SIDEWALK, ETC.)		
GRAVEL		
CURB & GUTTER		
RAILROAD		
GUARDRAIL		
FENCE - AS LABELED		

GENERAL NOTES:

1. THESE DRAWINGS ARE NEITHER A LEGALLY RECORDED MAP, NOR A SURVEY, AND IS NOT INTENDED TO BE USED AS ONE.
2. ALL PROPERTY LINES SHOWN ARE ESTABLISHED FROM COUNTY GIS FILES. PROPERTY LINES MAY NOT REFLECT ACTUAL LOT LINE LOCATIONS AND ARE FOR INFORMATIONAL PURPOSES ONLY.
3. UTILITY LOCATIONS SHOWN ON THE PLANS WERE PROVIDED BY THE UTILITY OWNER. FIELD LOCATIONS MAY VARY AND ADDITIONAL UTILITIES MAY EXIST. CONTRACTOR SHALL CONTACT DIGGERS HOTLINE A MINIMUM OF 3 WORKING DAYS PRIOR TO BEGINNING CONSTRUCTION.
4. ALL LENGTHS OF PROPOSED UTILITIES SHOWN ON THE PLANS ARE PER DESIGN, ACTUAL LENGTHS MAY VARY DURING CONSTRUCTION.

MAPPING & TOPOGRAPHY SYMBOLOGY

DESCRIPTION	EXISTING SYMBOL	PROPOSED SYMBOL
BENCHMARK		
CATCH BASIN/INLET		
CONTROL POINT		
CULVERT	(DIA. & TYPE)	(LENGTH-DIA. & TYPE)
CURB STOP		G OR W
ELECTRIC PEDESTAL		
FIRE HYDRANT		
IRON PIPE = IP IRON ROD = IR	OR	IP OR IR
LIGHT - ORNAMENTAL		
LIGHT - STREET		
MAILBOX		
MANHOLE ELECTRIC		
MANHOLE GAS		
MANHOLE MISCELLANEOUS		MH
MANHOLE SANITARY		SAN MH
MANHOLE SIGNAL		SIG MH
MANHOLE STORM		STM MH
MANHOLE STORM INLET CATCH BASIN		
MANHOLE WATER		
MANHOLE TELEPHONE		
METER - GAS		
METER - WATER		
PEDESTAL CABLE TV		
PEDESTAL TELEPHONE		
SIGN		
BUSH CONIFER		
BUSH DECIDUOUS		
TREE DECIDUOUS/INCH DIA	12"	
TREE CONIFEROUS/INCH DIA	10"	
TREE LINE		
VALVE: W=WATER, G=GAS	OR	W OR G
UTILITY POLE		
SILT FENCE	SF	SF
MAJOR CONTOURS	890	890
MINOR CONTOURS		
SPOT ELEVATIONS	+891.2	+891.22
INLET PROTECTION		
PROPOSED ASPHALT PAVEMENT		
PROPOSED GRAVEL		
PROPOSED CONCRETE		

LIST OF STANDARD ABBREVIATIONS

ASPH	ASPHALT	NTS	NOT TO SCALE
B/B	BACK TO BACK	PC	POINT OF CURVATURE
BOC	BACK OF CURB	PCC	POINT OF COMPOUND CURVE
BLDG	BUILDING	PED	PEDESTAL
BM	BENCHMARK	PVMT	PAVEMENT
BSMT	BASEMENT	PI	POINT OF INTERSECTION
C	CUT	PL	PROPERTY LINE
C&G	CURB AND GUTTER	PP	POWER POLE
C/C	CENTER TO CENTER	PROP	PROPOSED
CABC	CRUSHED AGGREGATE BASE COURSE	PT	POINT OF TANGENCY
CB	CATCH BASIN	PVC	POLYVINYL CHLORIDE
CI	CAST IRON PIPE	PVC	POINT OF VERTICAL CURVATURE
CL	CENTERLINE	PVI	POINT OF VERTICAL INTERSECTION
CMP	CORRUGATED METAL PIPE	PVT	POINT OF VERTICAL TANGENCY
CO	CLEAN OUT	R	RANGE OR RADIUS
CONC	CONCRETE	RCP	REINFORCED CONCRETE PIPE
CP	CONTROL POINT	REBAR	REINFORCEMENT BAR
CTH	COUNTY TRUNK HIGHWAY	REQD	REQUIRED
CTV	CABLE TV	RL	REFERENCE LINE
CS	CURB STOP	ROW	RIGHT-OF-WAY
DIA	DIAMETER	SAN	SANITARY
DI	DUCTILE IRON PIPE	WALK	SIDEWALK
EA	EACH	SF	SILT FENCE
ELEC	ELECTRIC (E WHEN USED IN LINE STYLE)	SL	SANITARY LATERAL
EP	EDGE OF PAVEMENT	SHLDR	SHOULDER
EXIST	EXISTING	STA	STATION
FH	FIRE HYDRANT	STH	STATE TRUNK HIGHWAY
FL	FLOW LINE	STM	STORM OR STORM SEWER
FM	FORCE MAIN	TEL	TELEPHONE
FO	FIBER OPTIC	TEMP	TEMPORARY
G	GAS	TOC	TOP OF CURB
GV	GAS VALVE	TYP	TYPICAL
GW	GUY WIRE	VC	VERTICAL CURVE
INV	INVERT	WM	WATER MAIN
IP	IRON PIPE OR PIN	WS	WATER SERVICE
L	LENGTH (OF CURVE)	WV	WATER VALVE
LC	LONG CHORD OF CURVE		
LP	LIGHT POLE		
MB	MAILBOX		
MG	METER-GAS		
MH	MANHOLE		

BENCHMARKS

1	NGS "4X75"	749.25
2	CHISELED 'X' ON NE BOLT ON HYDRANT AT SW CORNER OF N130 CTH N	750.64
3	SAN MH RIM NEAR NW CORNER OF N130 CTH N	748.26
4	BURY BOLT 6-6 ON HYDRANT AT WEST END OF RUBY COURT	748.36

I:\Clients-GrBoy\B4916 Buchanan Town of\095 N130 CTH N Property - Storm Water Management Feasibility Study\100 Cad\DWG\CoverDetails.dwg 09/23/21 3:12:13 PM

JOB NO.	04916-0099
BOOK NO.	
DRAWN BY	BJG
CHECKED BY	JJK
DATE	SEPTEMBER 23, 2021
REVISIONS	
REFERENCE FILE	
DRAWING FILE	

www.cedarcorp.com
800-472-7372

engineers • architects • planners • environmental specialists
land surveys • landscape architects • interior designers

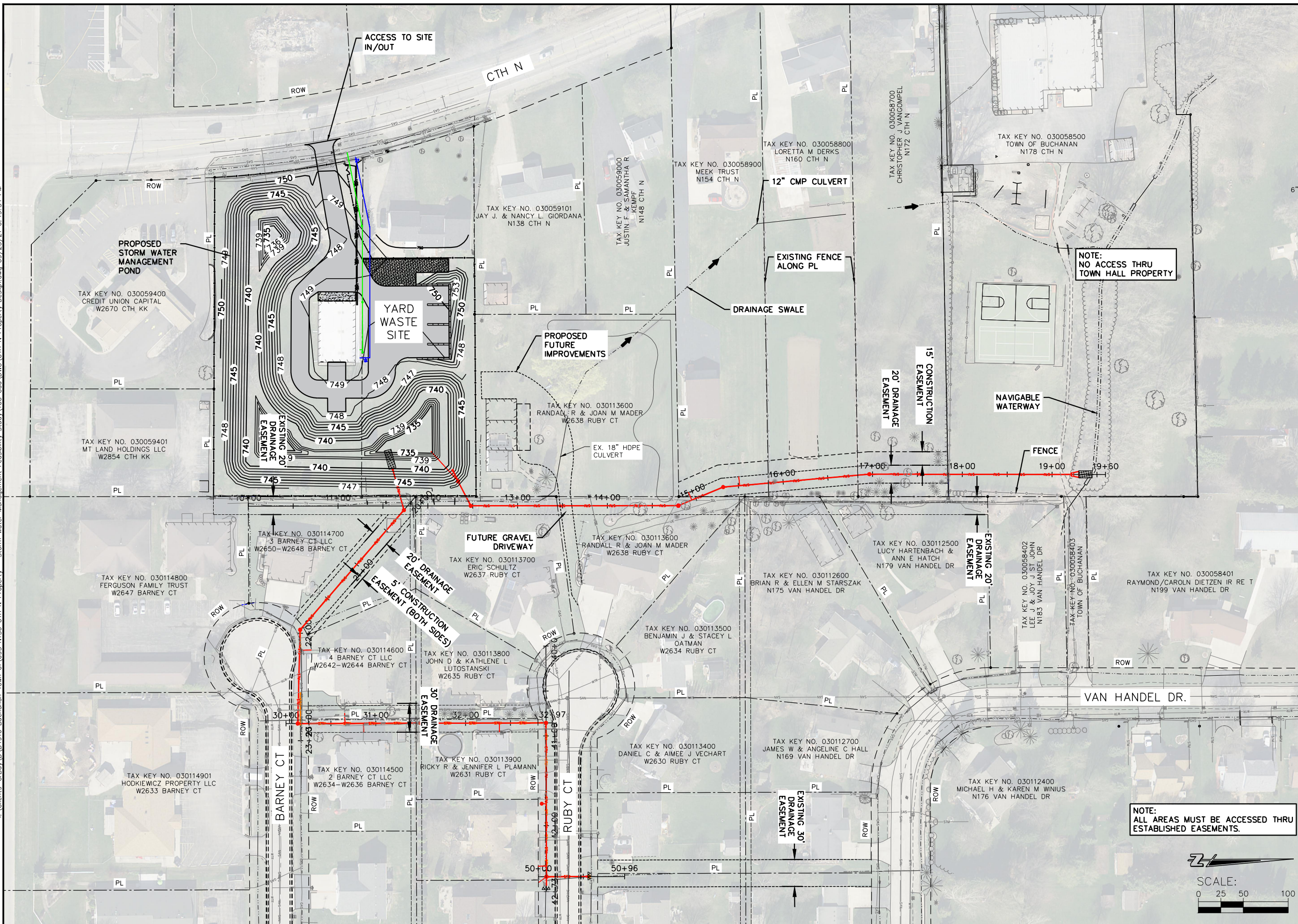
Cedar
corporation

1695 Bellevue Street
Menomonee, WI 54311
715-235-3088
920-491-9081
715-235-3088
920-491-9081
715-235-3088

1695 Wilson Commons W.
Suite 402
Madison, WI 53718
608-354-0037
262-264-2360
608-354-0037
262-264-2360

TOWN OF BUCHANAN
N130 CTH N PROPERTY - STORM WATER MANAGEMENT
CONTRACT NO. B-21
STANDARD SYMBOLS AND ABBREVIATIONS

I:\Clients-GrBoy\B4916-Buchanan_Town_of_095_N130_CTH_N_Property_Management_Feasibility_Study\100_Cad\DWG\CTH_N_Property_Design.dwg 09/23/21 6:49:34 PM



JOB NO.	04916-0095
DRAWN BY	BJG
CHECKED BY	JKK
DATE	SEPTEMBER 20, 2021
REVISIONS	
REFERENCE FILE	
DRAWING FILE	

www.cedarcorp.com
800-472-7372

engineers • architects • planners • environmental specialists
land surveys • landscape architects • interior designers

Cedar
corporation

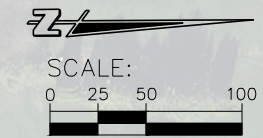
2805 Wilson Commons W.
Suite 142
Madison, WI 53718
608-204-2800
FAX: 608-249-5824

1695 Bellevue Street
Green Bay, WI 54311
920-951-9081
FAX: 920-951-9020

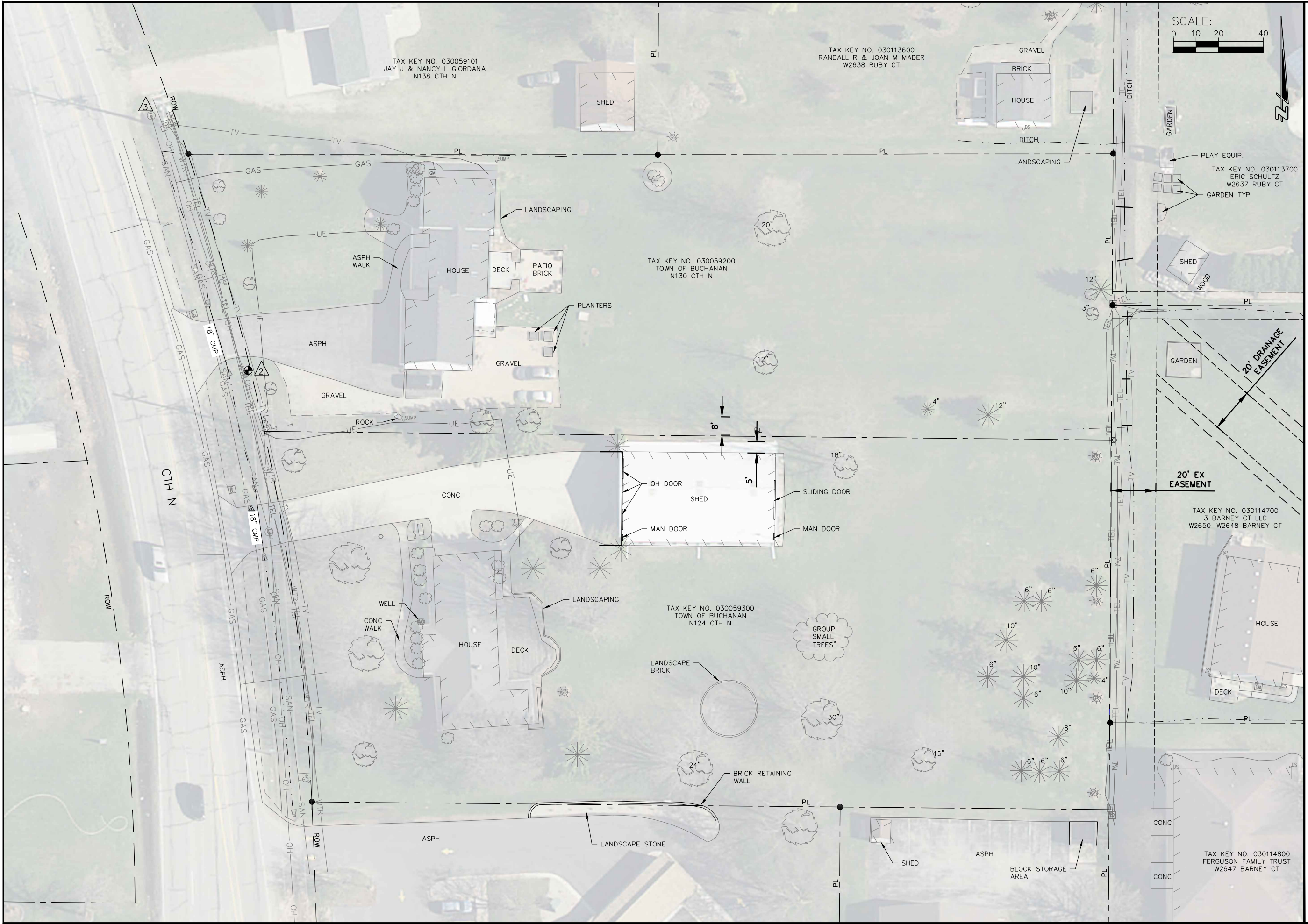
604 Wilson Ave.
Menomonee, WI 54751
715-235-3981
FAX: 715-235-2727

TOWN OF BUCHANAN
N130 CTH N PROPERTY - STORM WATER MANAGEMENT
CONTRACT NO. B-21
TRAFFIC CONTROL AND ACCESS PLAN

NOTE:
ALL AREAS MUST BE ACCESSED THRU
ESTABLISHED EASEMENTS.



I:\Clients-G\Boy\B\B4916 Buchanan Town of\095 N130 CTH N Property - Storm Water Management Feasibility Study\100 Cad\DWG\CTH N Property Design.dwg 05/23/21 6:49:45 PM



SCALE:
 0 10 20 40

JOB NO. 04916-0095
DRAWN BY BJG
CHECKED BY JKK
DATE SEPTEMBER 23, 2021
REVISIONS
REFERENCE FILE
DRAWING FILE

www.cedarcorp.com
800-472-7372

Cedar corporation
 engineers • architects • planners • environmental specialists
 land surveys • landscape architects • interior designers

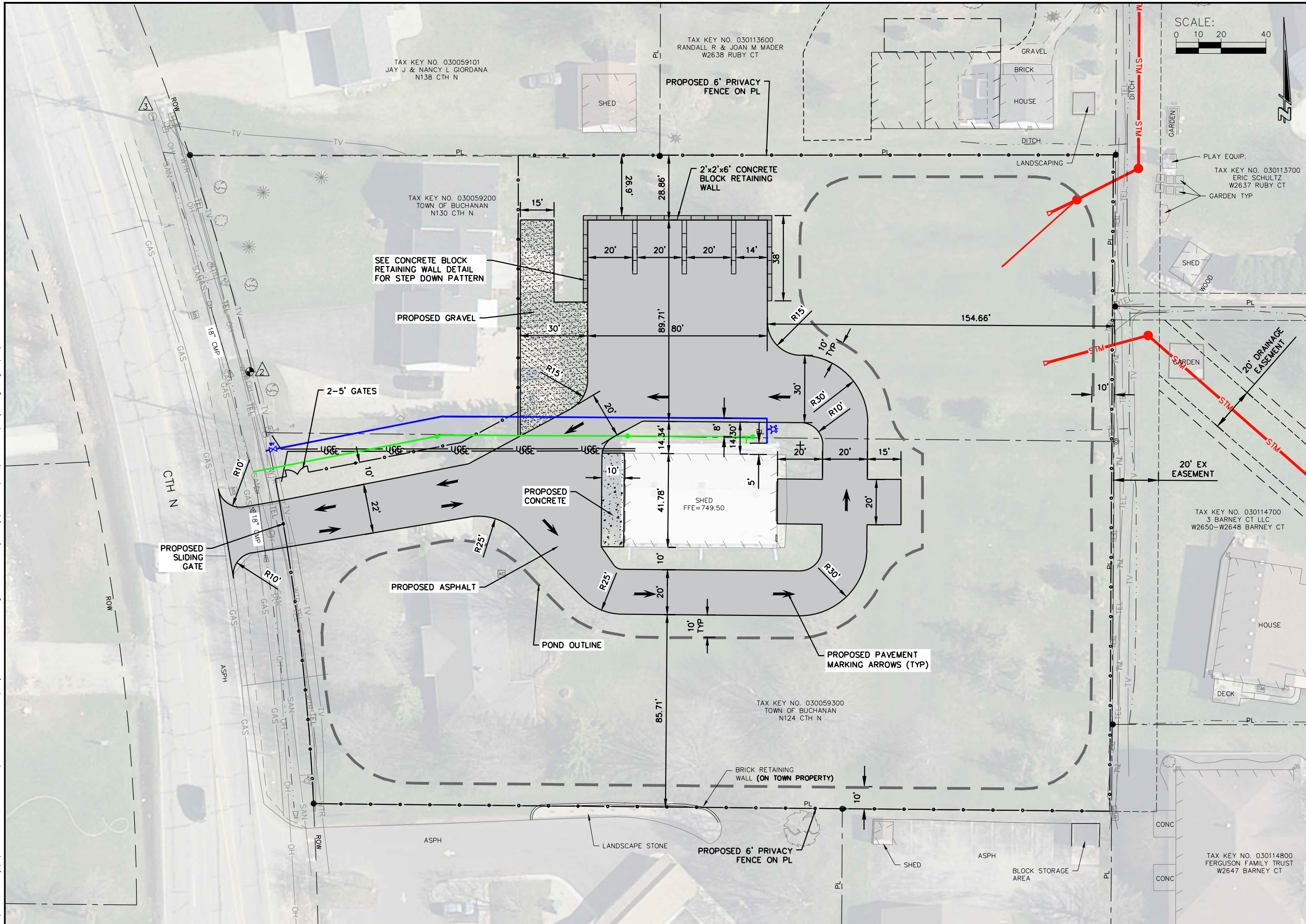
2820 Weston Commons W.
Madison, WI 53718
608-354-0037
FAX 608-249-5824

1905 Bellvue Street
Green Bay, WI 54311
920-491-9081
FAX 920-491-9020

604 Wilson Ave
Menomonie, WI 54751
715-235-9081
FAX 715-235-2727

TOWN OF BUCHANAN
N130 CTH N PROPERTY - STORM WATER MANAGEMENT
CONTRACT NO. B-21
YARD WASTE AND POND EXISTING CONDITIONS

I:\Clients-GrBoy\B\B4916 Buchanan Town of\095 N130 CTH N Property - Storm Water Management Feasibility Study\100 Cod\DWG\CTH N Property Design.dwg 09/23/21 6:50:05 PM



SCALE:
0 10 20 40

JOB NO.	04916-0095
DRAWN BY	BJG
CHECKED BY	JKK
DATE	SEPTEMBER 23, 2021
REVISIONS	
REFERENCE FILE	
DRAWING FILE	

www.cedarcorp.com
800-472-7372

Cedar
corporation

engineers • architects • planners • environmental specialists
land surveyors • landscape architects • interior designers

2820 Weston Commons W.
Madison, WI 53718
608-354-0037
608-354-0037
FAX 608-249-5824

1905 Bellvue Street
Green Bay, WI 54311
920-491-9081
920-491-9081
FAX 920-491-9020

604 Wilson Ave
Menomonee, WI 54751
715-235-9081
715-235-9081
FAX 715-235-2727

TOWN OF BUCHANAN
N130 CTH N PROPERTY - STORM WATER MANAGEMENT
CONTRACT NO. B-21
YARD WASTE AND POND SITE PLAN

SHEET NO.
6 of 18

I:\Clients-GrBoy\B\B4916 Buchanan Town of\095 N130 CTH N Property - Storm Water Management Feasibility Study\100 Cod\DWG\CTH N Property Design.dwg 09/23/21 6:50:15 PM

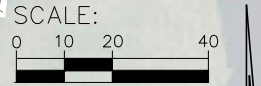
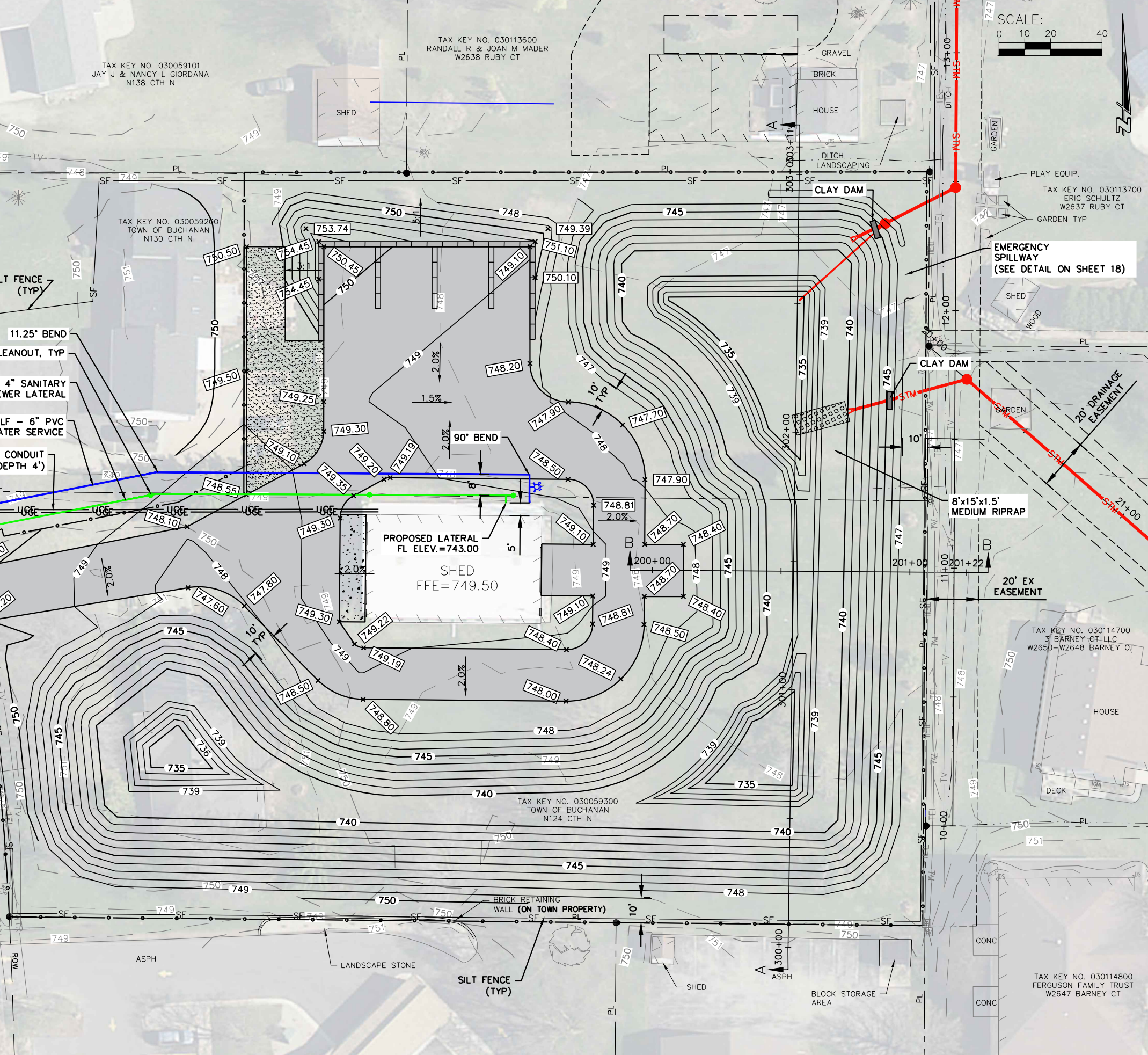
- NOTES:**
1. ALL DISTURBED STORM WATER POND SLOPE AREAS SHALL BE RESTORED WITH 6" TOPSOIL, SEED, FERTILIZER AND EROSION MAT PER SPECIFICATIONS. AREAS BELOW THE BOTTOM OF THE SAFETY SHELF (ELEVATION 740) SHALL NOT BE RESTORED.
 2. ALL DISTURBED VEGETATED AREAS SHALL BE RESTORED WITH 6" TOPSOIL, SEED, FERTILIZER AND MULCH PER SPECIFICATIONS.
 3. CLEAR AND GRUB ALL TREES IN THE AREAS OF DISTURBANCE

EARTHWORK VOLUME CALCULATION - STORM WATER POND:

STORM WATER MANAGEMENT POND AREA
 CUT GENERATED = 8,600 CY
 FILL REQUIRED = 100 CY
 NET = 8,500 CY CUT

TOTAL = 8,500 CY OF EXCESS MATERIAL TO BE USED ON SITE OR DISPOSED OF PER SPECIFICATIONS.

NOTE: 6" OF EXISTING TOPSOIL ASSUMED IN EARTHWORK CALCULATIONS.
 NOTE: A PORTION OF N130 CTH N LOT WAS BACKFILLED WITH TOPSOIL



JOB NO.	04916-0095
DRAWN BY	BJG
CHECKED BY	JKK
DATE	SEPTEMBER 23, 2021
REVISIONS	
REFERENCE FILE	
DRAWING FILE	

www.cedarcorp.com
800-472-7372

Cedar corporation

engineers • architects • planners • environmental specialists
 land surveys • landscape architects • interior designers

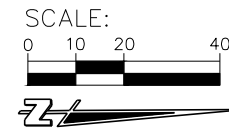
2820 Waton Commons W.
 Cedarburg, WI 53012
 608-354-0037
 FAX 262-375-2686

1925 Bellevue Street
 Green Bay, WI 54311
 715-235-9081
 920-491-9081
 FAX 920-491-9020

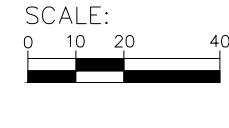
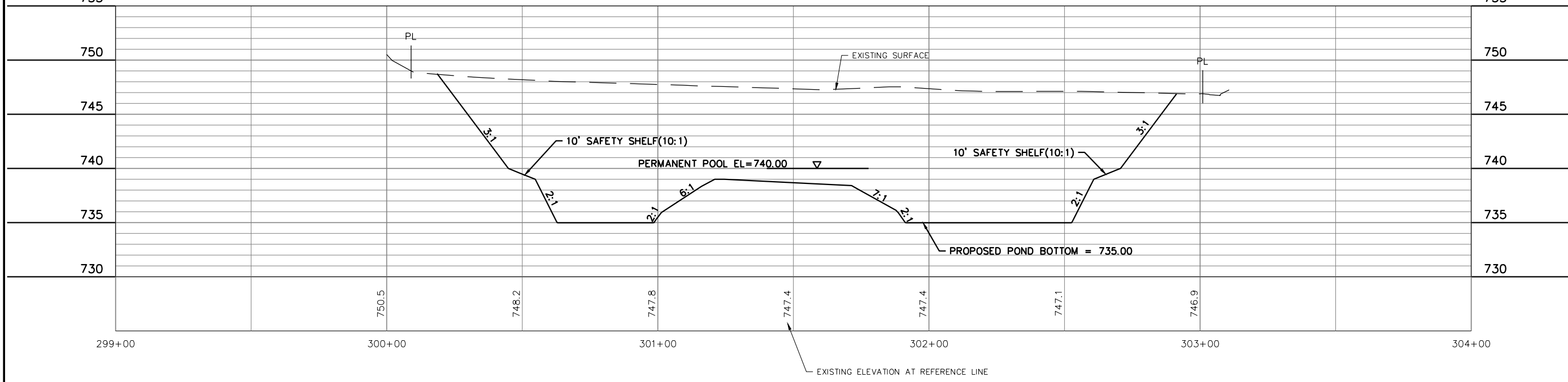
604 Wilson Ave.
 Menomonie, WI 54751
 715-235-9081
 FAX 715-235-2727

TOWN OF BUCHANAN
 N130 CTH N PROPERTY - STORM WATER MANAGEMENT
 CONTRACT NO. B-21
 YARD WASTE AND POND GRADING & EROSION CONTROL PLAN

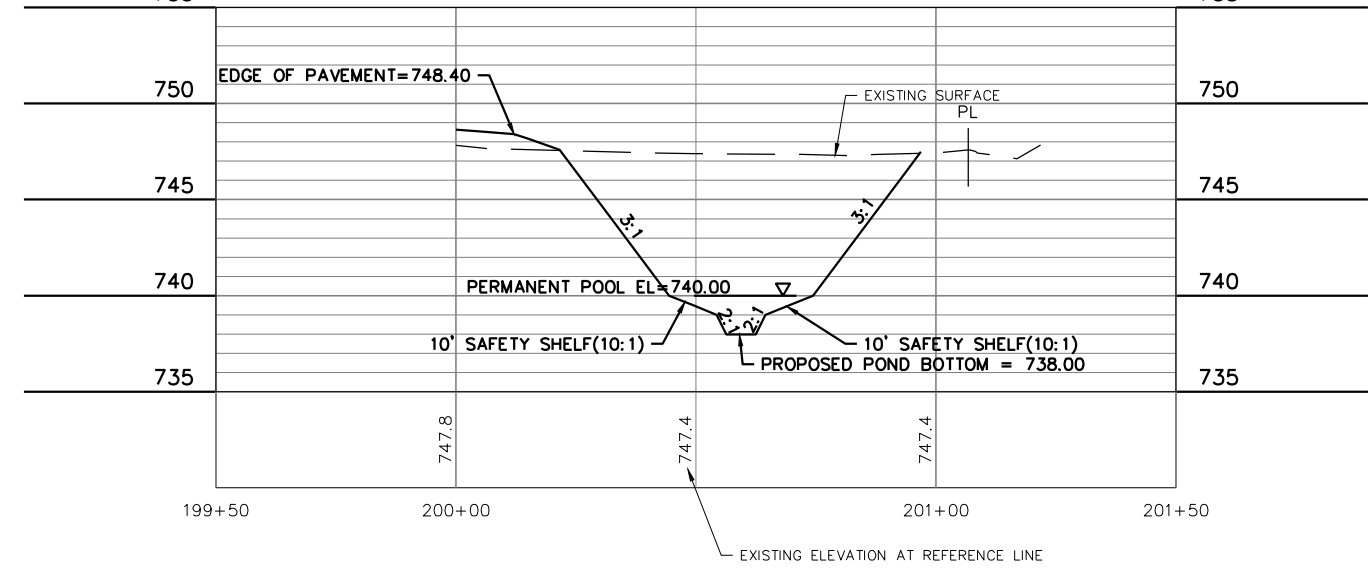
I:\Clients-OrBoy\B\B4916 Buchanan Town of\095 N130 CTH N Property - Storm Water Management Feasibility Study\100 Cad\DWG\CTH N Property Design.dwg 09/23/21 6:50:28 PM



SECTION A-A PROFILE



SECTION B-B PROFILE



JOB NO.	04916-0095
DRAWN BY	BJG
CHECKED BY	JKK
DATE	SEPTEMBER 23, 2021
REVISIONS	
REFERENCE FILE	---
DRAWING FILE	---

www.cedarcorp.com
800-472-7372

engineers • architects • planners • environmental specialists
land surveys • landscape architects • interior designers

Cedar Corporation

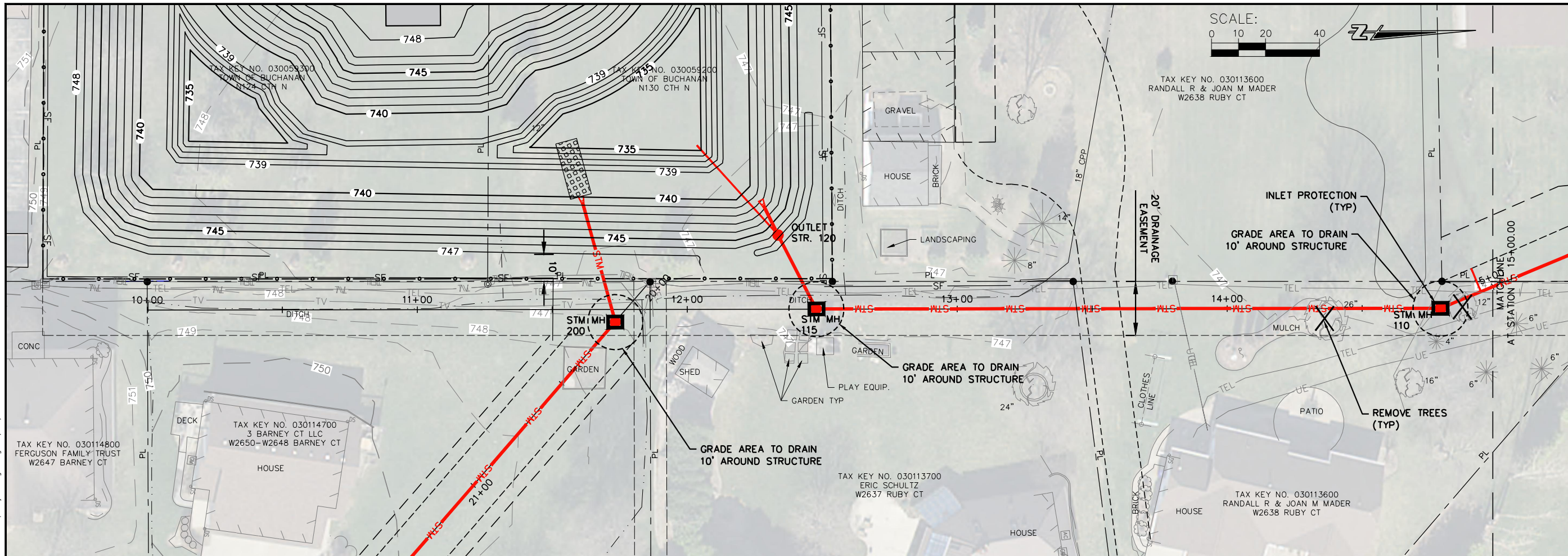
2905 Wilson Commons W.
Suite 142
Madison, WI 53718
608-204-2580
FAX: 608-249-5824

1695 Bellevue Street
Green Bay, WI 54311
920-991-9081
FAX: 920-991-9020

604 Wilson Ave.
Menomonie, WI 54751
715-235-3951
FAX: 715-235-3727

TOWN OF BUCHANAN
N130 CTH N PROPERTY - STORM WATER MANAGEMENT
CONTRACT NO. B-21
YARD WASTE AND POND CROSS SECTIONS

I:\Clients-GrBoy\B\B4916 Buchanan Town of Buchanan N130 CTH N Property - Storm Water Management Feasibility Study\100 Cad\DWG\CTH N Property Design.dwg 09/23/21 6:50:40 PM



JOB NO.	04916-0095
DRAWN BY	BJG
CHECKED BY	JKK
DATE	SEPTEMBER 23, 2021
REVISIONS	
REFERENCE FILE	
DRAWING FILE	

Cedar
Corporation

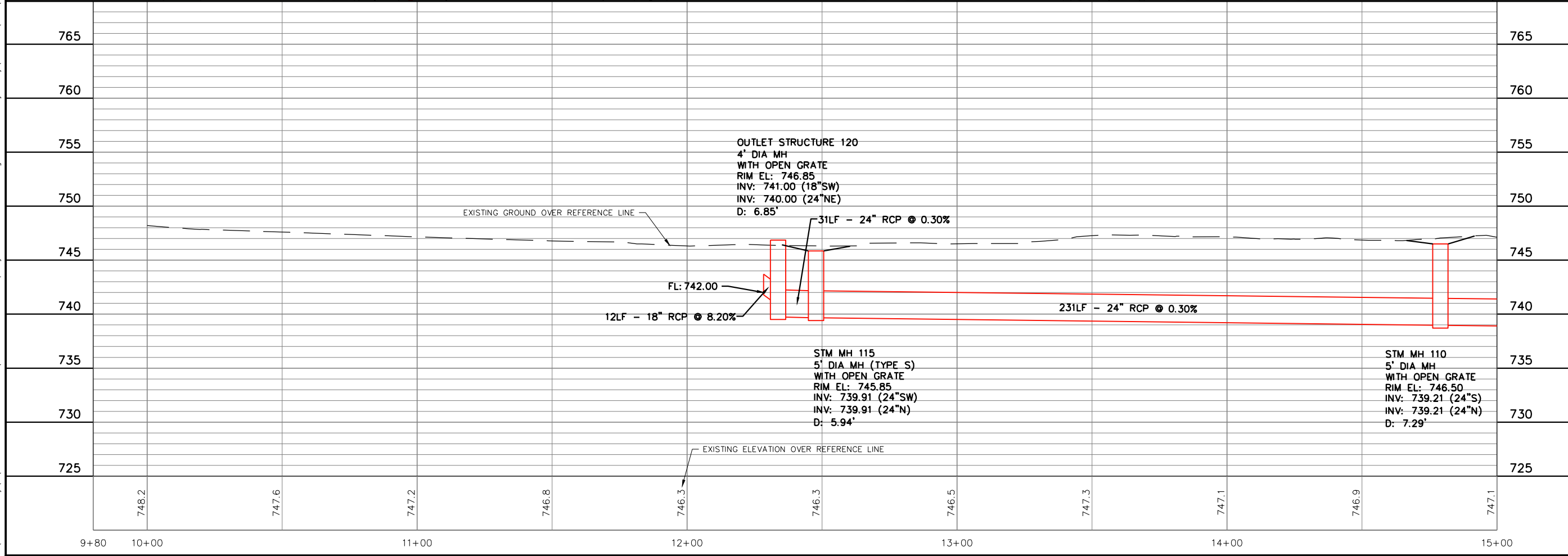
www.cedarcorp.com
800-472-7372

engineers • architects • planners • environmental specialists
land surveys • landscape architects • interior designers

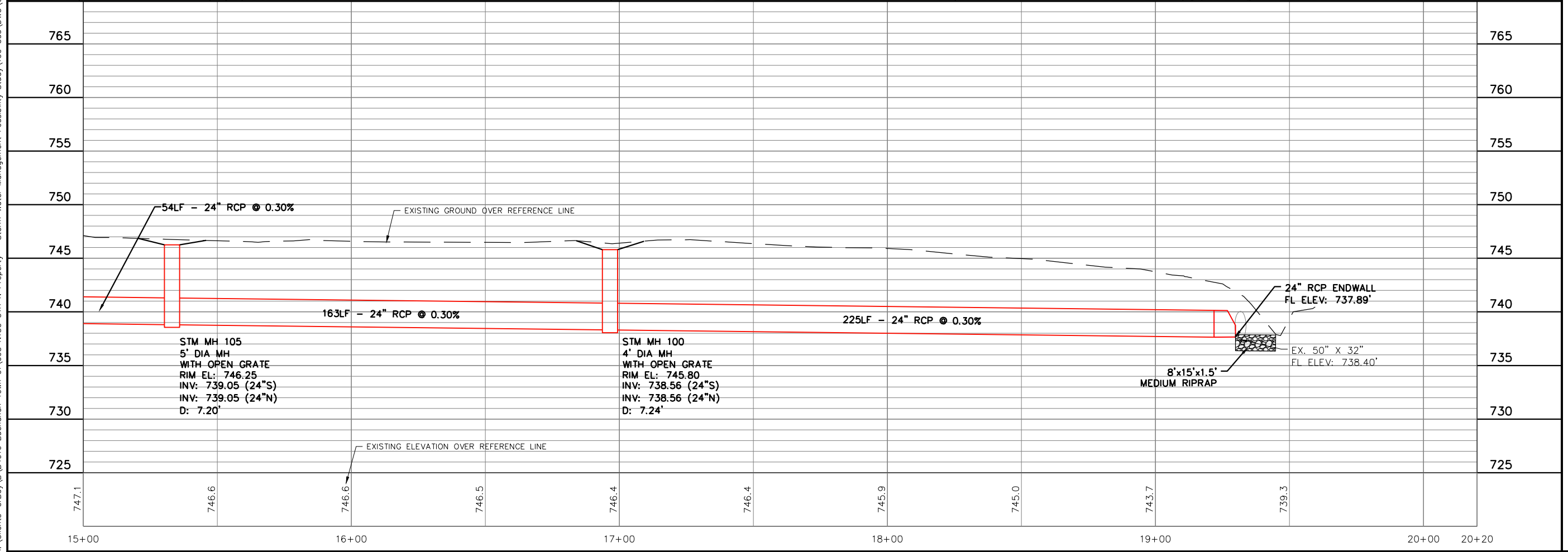
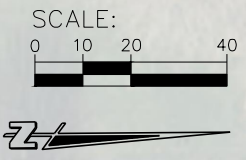
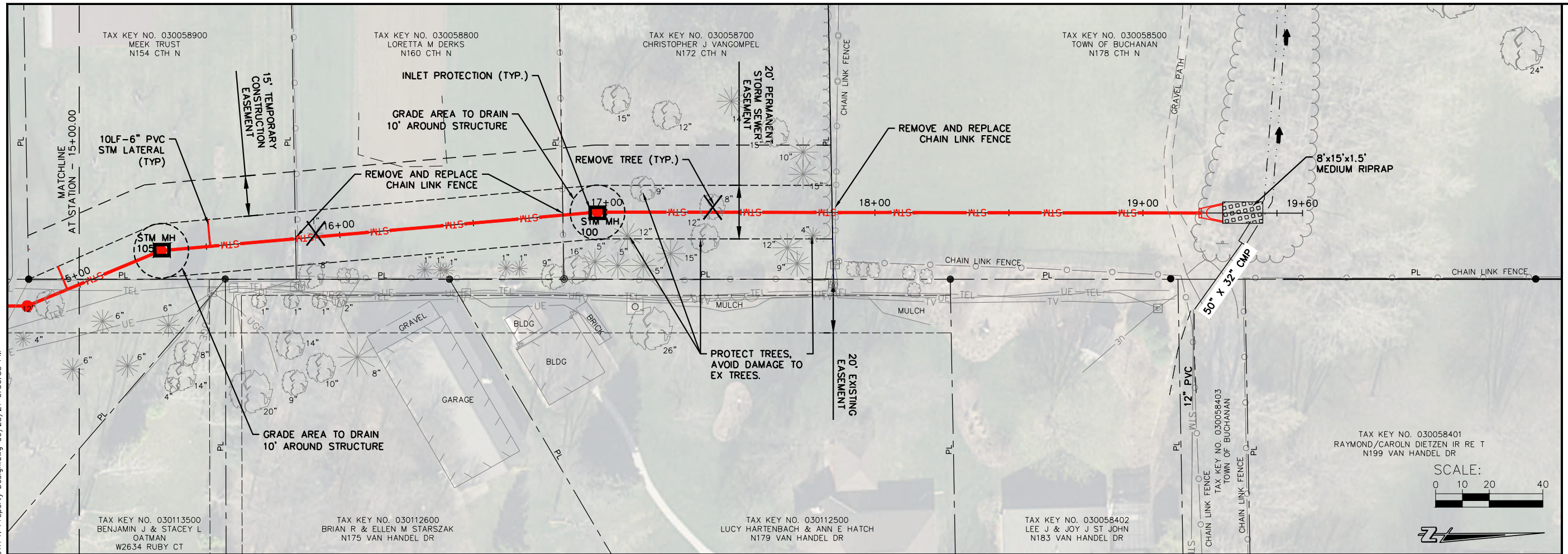
2605 Wilson Commons W.
Suite 142
Madison, WI 53718
608-204-2580
FAX: 608-249-5824

604 Wilson Ave.
Menomonee, WI 54751
715-235-3981
FAX: 715-235-3727

TOWN OF BUCHANAN
N130 CTH N PROPERTY - STORM WATER MANAGEMENT
CONTRACT NO. B-21
STORM SEWER OUTFALL



I:\Clients-GrBoy\B\B4916 Buchanan Town of\095 N130 CTH N Property - Storm Water Management Feasibility Study\100 Cad\DWG\CTH N Property Design.dwg 09/23/21 6:50:55 PM



JOB NO.	04916-0095
DRAWN BY	BJG
CHECKED BY	JKK
DATE	SEPTEMBER 23, 2021
REVISIONS	
REFERENCE FILE	
DRAWING FILE	

www.cedarcorp.com
800-472-7372

engineers • architects • planners • environmental specialists
land surveys • landscape architects • interior designers

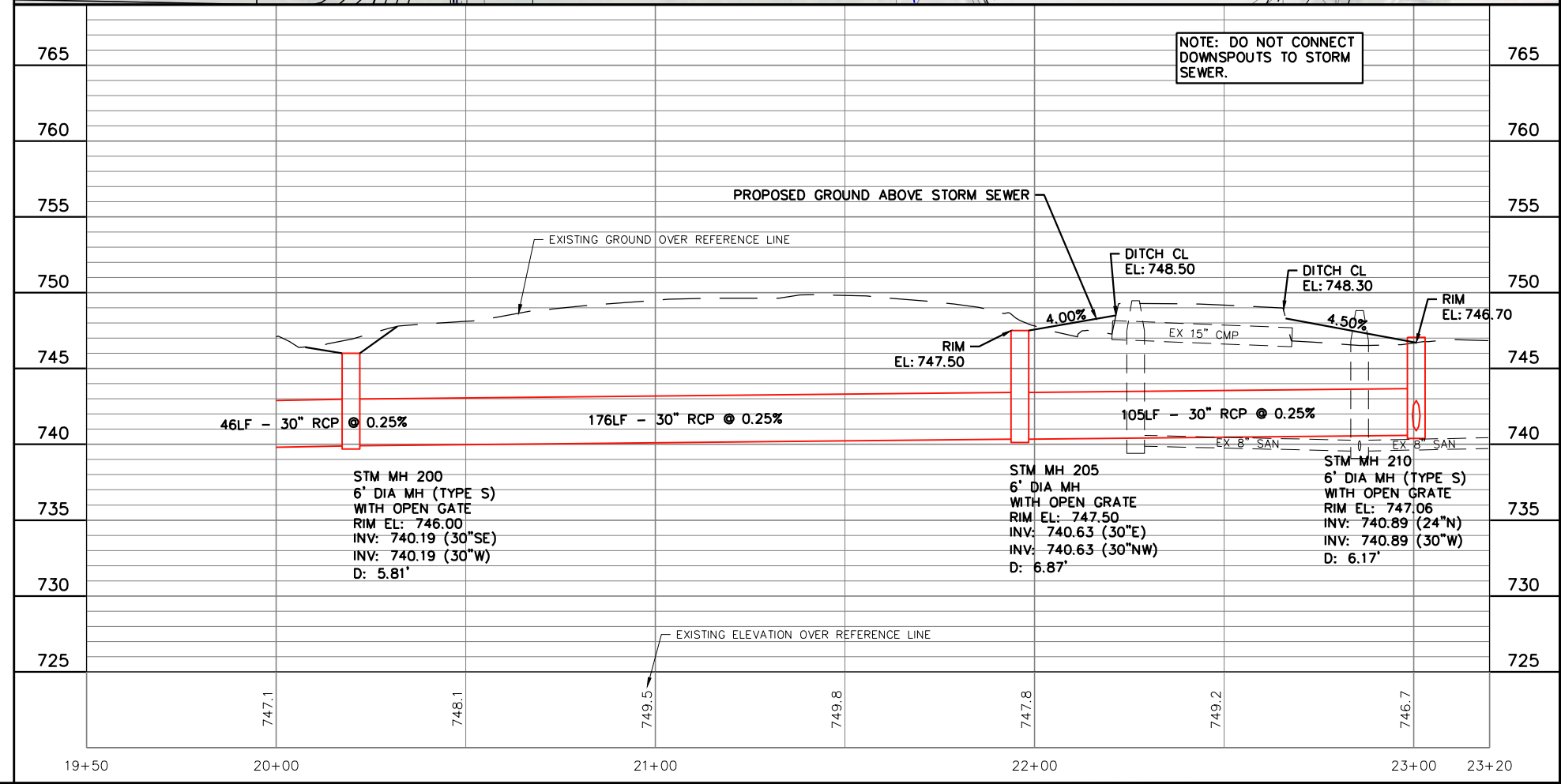
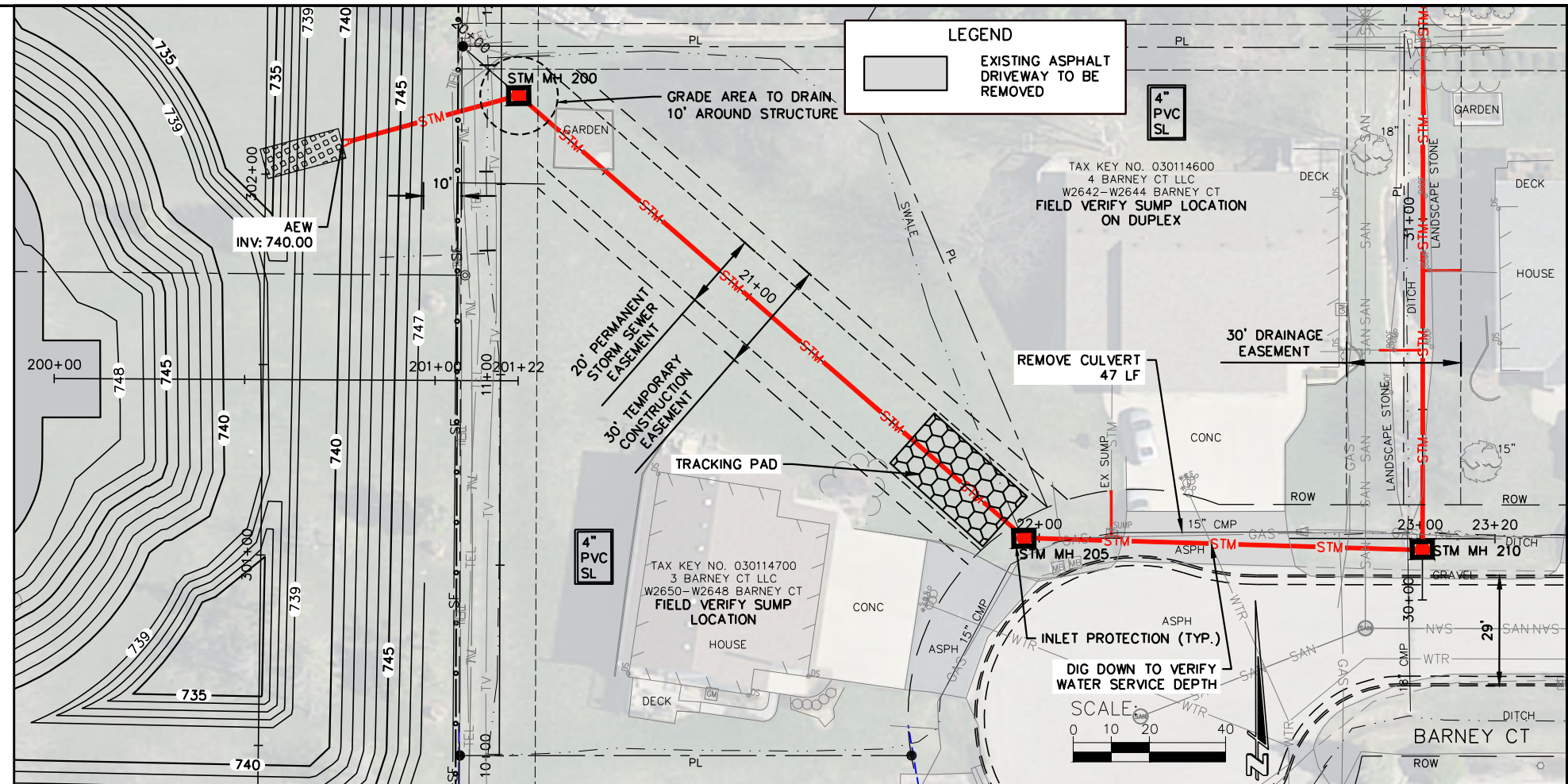
Cedar Corporation

2805 Nelson Commons W.
Suite 142
Madison, WI 53718
608-356-0037
262-204-2580
FAX: 608-249-5824

1695 Bellevue Street
Green Bay, WI 54311
920-991-9081
FAX: 920-991-7727

TOWN OF BUCHANAN
N130 CTH N PROPERTY - STORM WATER MANAGEMENT
CONTRACT NO. B-21
STORM SEWER OUTFALL

I:\Clients-GrBoy\B\B4916 Buchanan Town of\095 N130 CTH N Property - Storm Water Management\Feasibility Study\100 Cad\DWG\CTH N Property Design.dwg 09/23/21 6:51:09 PM



JOB NO.	04916-0095
DRAWN BY	BJG
CHECKED BY	JKK
DATE	SEPTEMBER 23, 2021
REVISIONS	
REFERENCE FILE	
DRAWING FILE	

www.cedarcorp.com
 800-472-7372

engineers • architects • planners • environmental specialists
 land surveys • landscape architects • interior designers

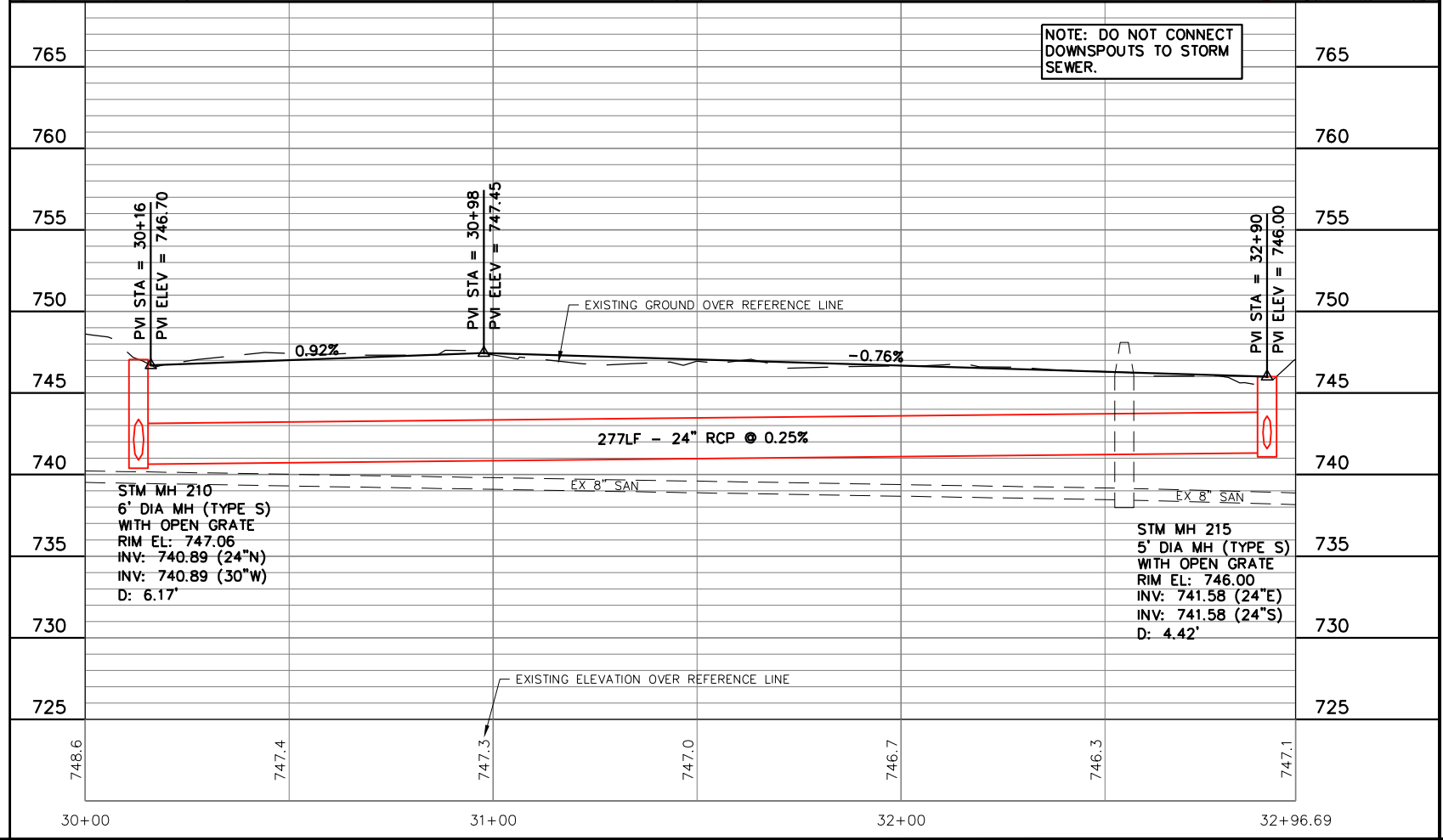
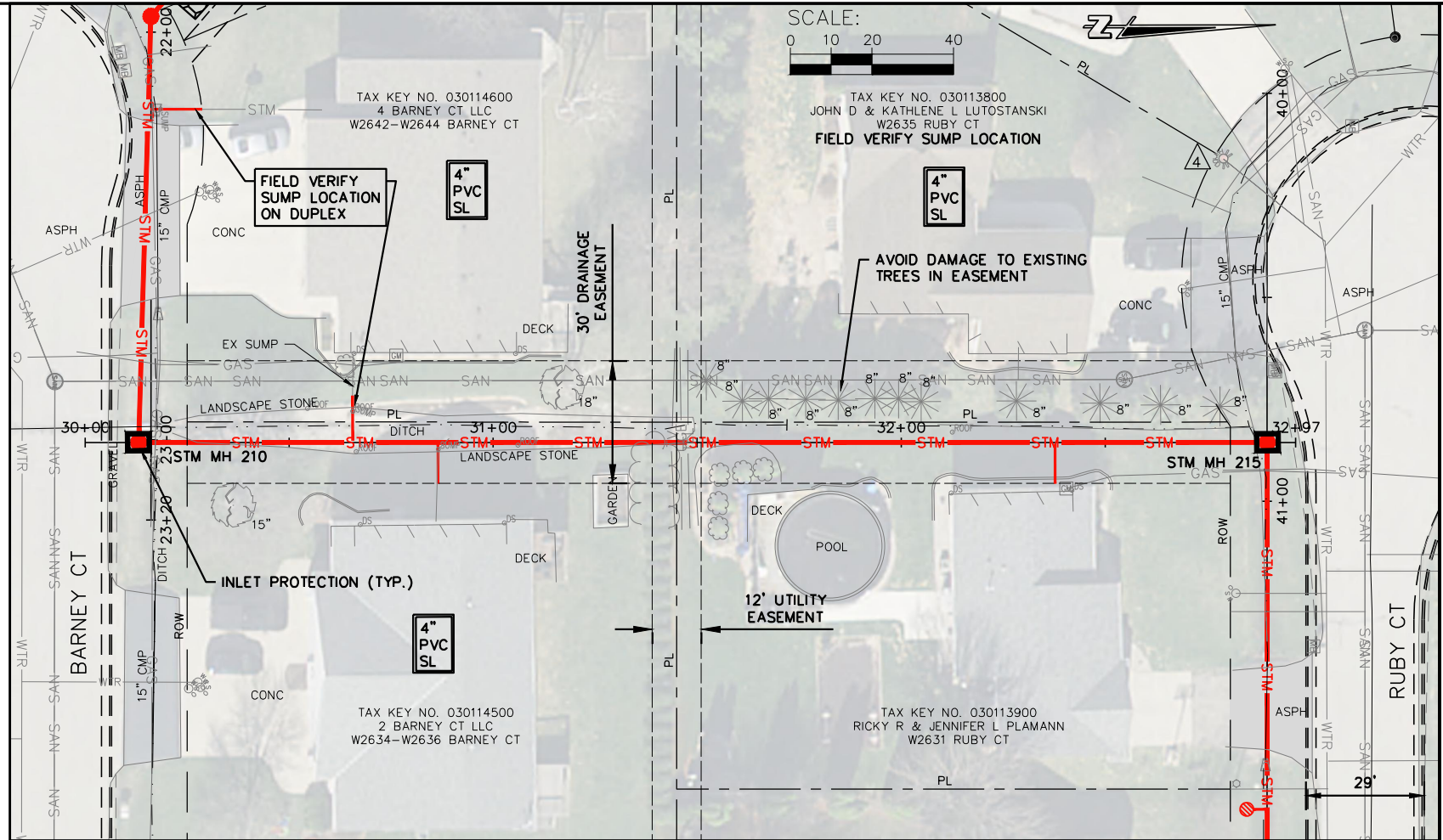
Cedar Corporation

1695 Bellevue Street
 Green Bay, WI 54311
 920-951-9081
 FAX: 920-491-8020
 FAX: 715-252-2727

2805 Wilson Commons W.
 Suite 142
 Madison, WI 53718
 608-356-0037
 FAX: 608-249-5824

TOWN OF BUCHANAN
 N130 CTH N PROPERTY - STORM WATER MANAGEMENT
 CONTRACT NO. B-21
 BARNEY COURT STORM SEWER EASEMENTS

I:\Clients-OrBoy\B\B4916 Buchanan Town of\095 N130 CTH N Property - Storm Water Management Feasibility Study\100 Cad\DWG\CTH N Property Design.dwg 09/23/21 6:51:25 PM



SCALE:
0 10 20 40

TAX KEY NO. 030113800
JOHN D & KATHLENE L LUTOSTANSKI
W2635 RUBY CT
FIELD VERIFY SUMP LOCATION

TAX KEY NO. 030114600
4 BARNEY CT LLC
W2642-W2644 BARNEY CT
FIELD VERIFY SUMP LOCATION ON DUPLEX

TAX KEY NO. 030114500
2 BARNEY CT LLC
W2634-W2636 BARNEY CT

TAX KEY NO. 030113900
RICKY R & JENNIFER L PLAMANN
W2631 RUBY CT

JOB NO. 04916-0095
DRAWN BY BJG
CHECKED BY JKK
DATE SEPTEMBER 23, 2021
REVISIONS
REFERENCE FILE
DRAWING FILE

www.cedarcorp.com
800-472-7372

Cedar Corporation
engineers • architects • planners • environmental specialists
land surveys • landscape architects • interior designers

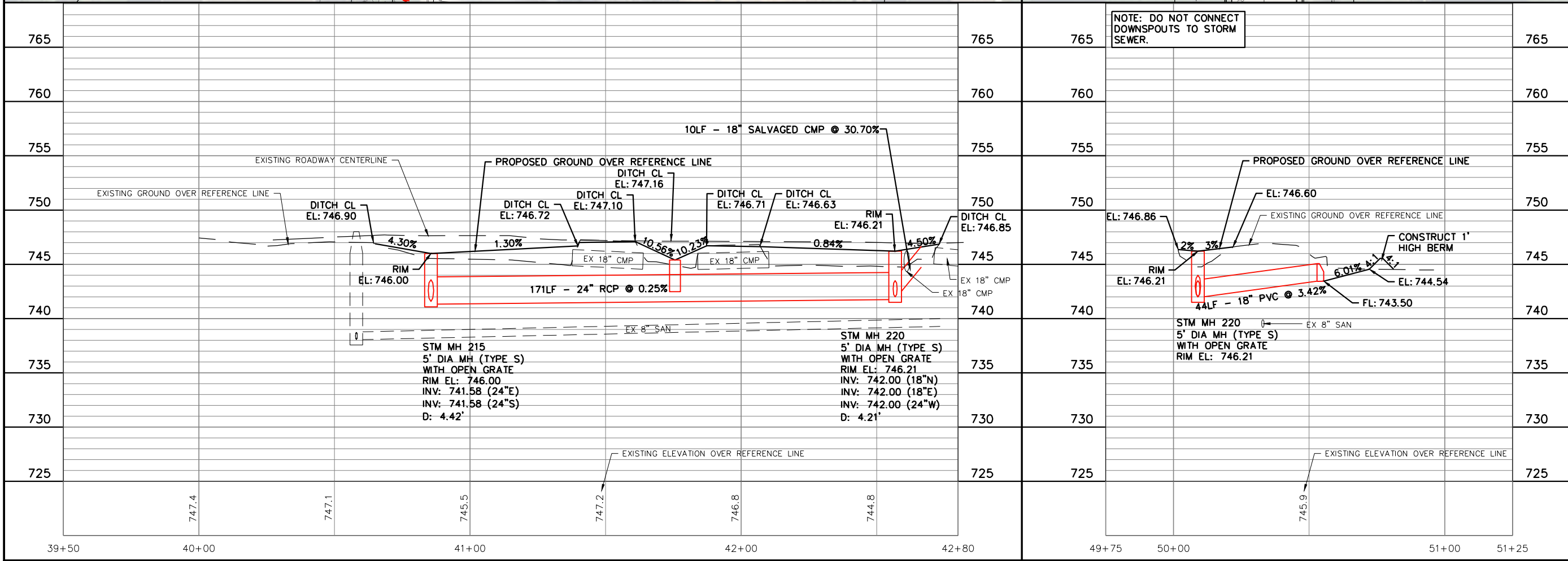
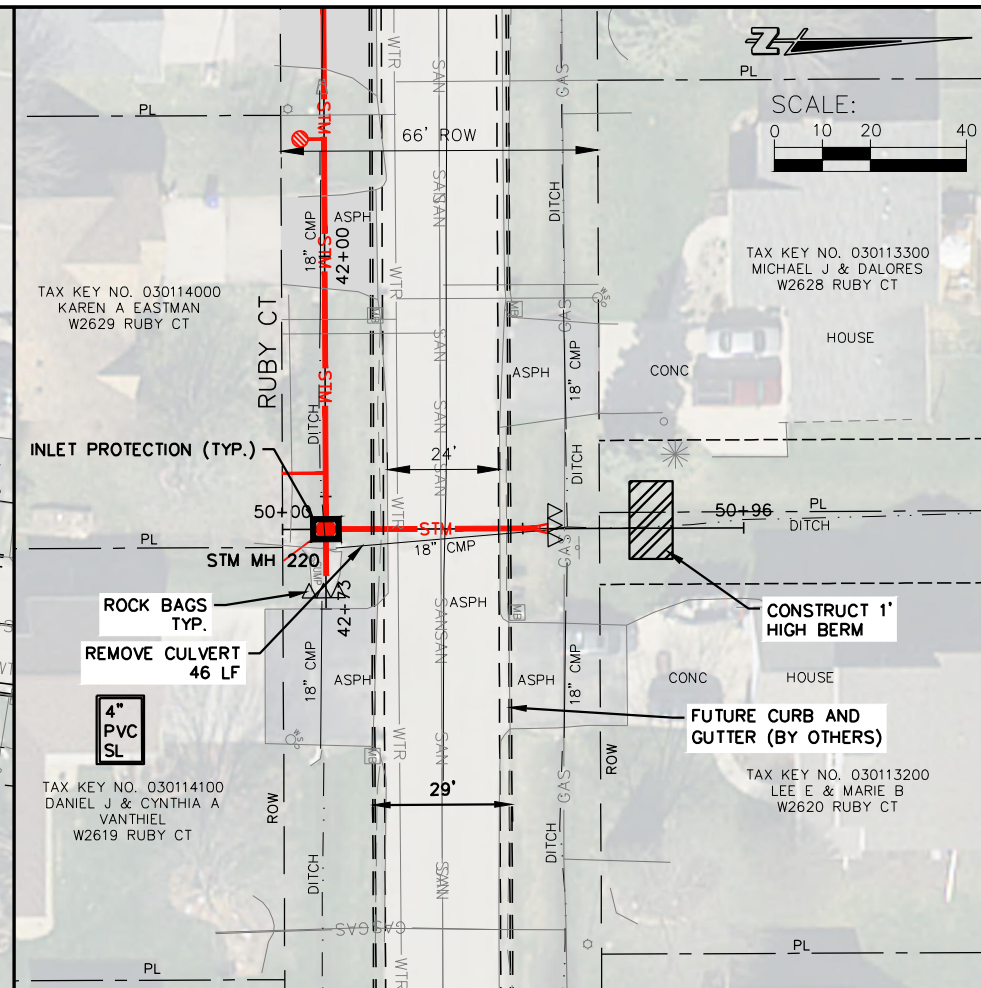
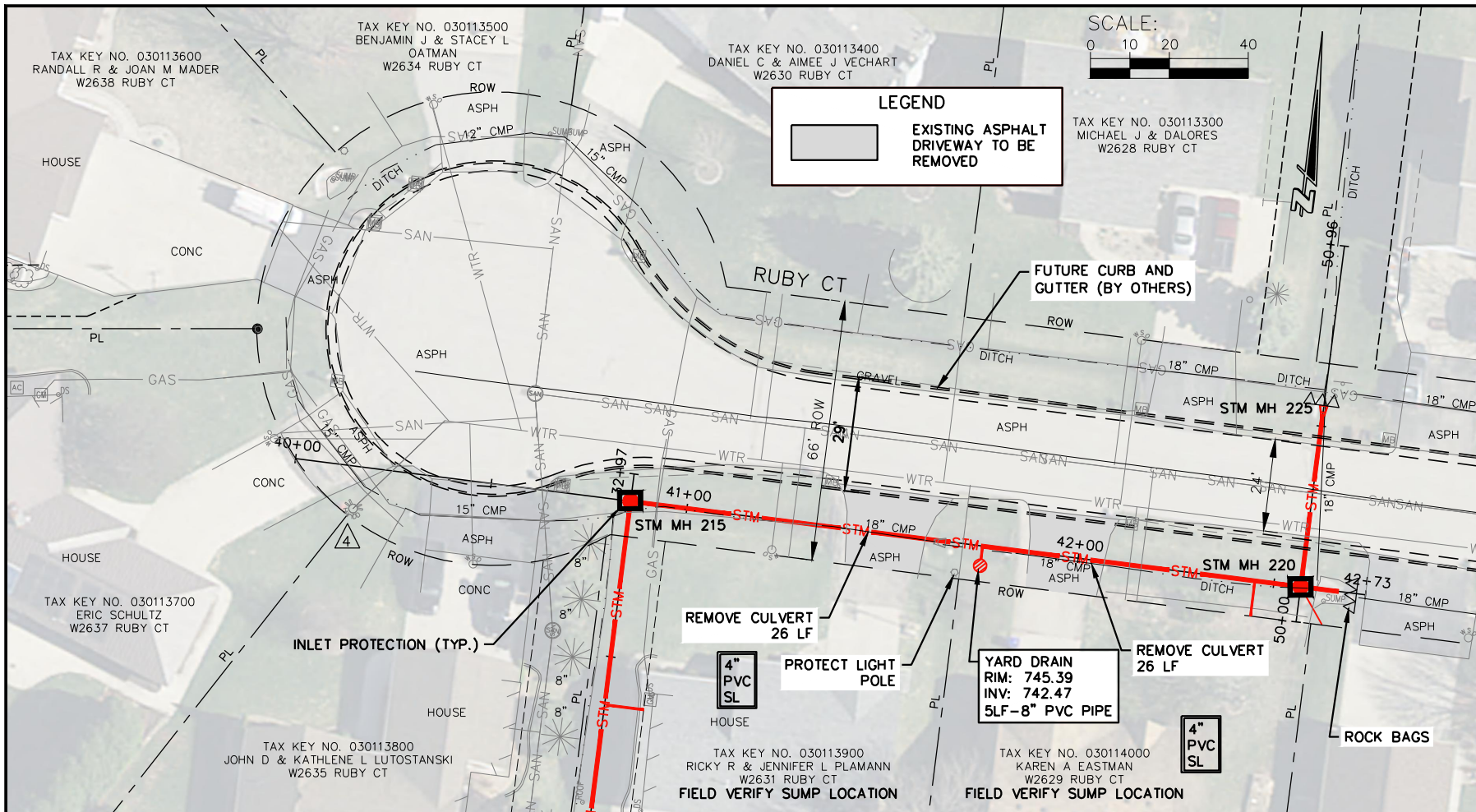
2805 Wilson Commons W.
Suite 142
Madison, WI 53718
608-304-0037
FAX: 608-249-5824

1695 Bellevue Street
Green Bay, WI 54311
920-951-9081
FAX: 920-951-9020

604 Wilson Ave.
Menomonie, WI 54751
715-235-3951
FAX: 715-235-2727

TOWN OF BUCHANAN
N130 CTH N PROPERTY - STORM WATER MANAGEMENT
CONTRACT NO. B-21
BARNEY COURT STORM SEWER EASEMENTS

I:\Clients-GrBoy\B\B4916 Buchanan Town of\095 N130 CTH N Property - Storm Water Management Feasibility Study\100 Cad\DWG\CTH N Property Design.dwg 09/23/21 6:51:50 PM



JOB NO. 04916-0095
 DRAWN BY BJC
 CHECKED BY JKK
 DATE SEPTEMBER 23, 2021
 REVISIONS
 REFERENCE FILE
 DRAWING FILE

www.cedarcorp.com
 800-472-7372
 Cedar Corporation
 engineers • architects • planners • environmental specialists
 land surveys • landscape architects • interior designers

2805 Wilson Commons W.
 Suite 142
 Madison, WI 53718
 608-308-0037
 FAX: 608-249-5824

604 Wilson Ave.
 Green Bay, WI 54311
 715-235-3951
 FAX: 715-235-2727

1695 Bellevue Street
 Menomonee, WI 54751
 920-091-5081
 FAX: 920-091-8020

TOWN OF BUCHANAN
 N130 CTH N PROPERTY - STORM WATER MANAGEMENT
 CONTRACT NO. B-21
 RUBY COURT STORM SEWER EASEMENT

SHEET NO.
 13 OF 18

NOTES:

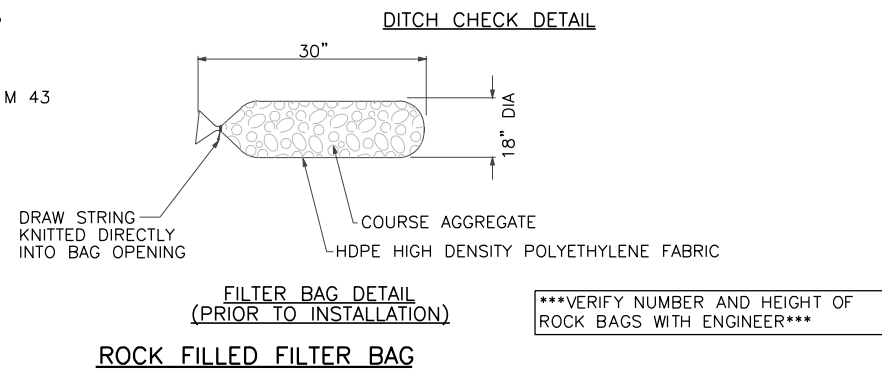
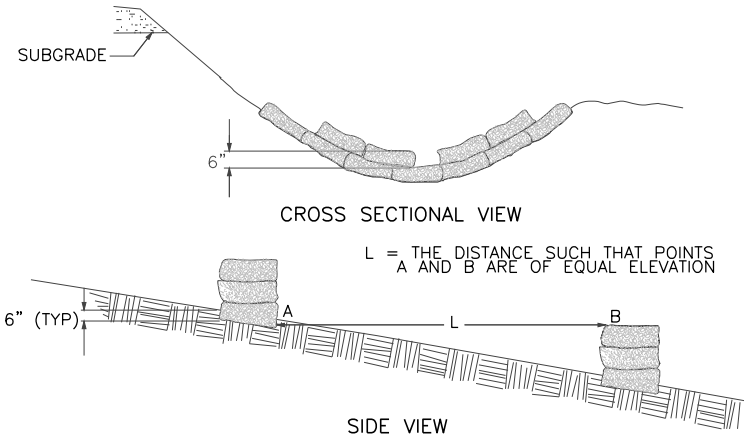
18" X 30" ROCK FILLED FILTER BAG SHALL BE COMPRISED OF THE FOLLOWING:
 -HDPE HIGH DENSITY POLYETHYLENE
 -HDPE HIGH DENSITY POLYETHYLENE DRAW STRING KNITTED DIRECTLY INTO BAG OPENING
 -80% FABRIC CLOSURE WITH APPARENT OPENING SIZE NO LARGER THAN *" X *"
 -ROLLED SEAM USING A MINIMUM OF 480 DENIER POLYESTER SEWING YARN FOR STRENGTH AND DURABILITY.

USE WELL GRADED COURSE AGGREGATE CONFORMING TO THE FOLLOWING GRADATION REQUIREMENTS

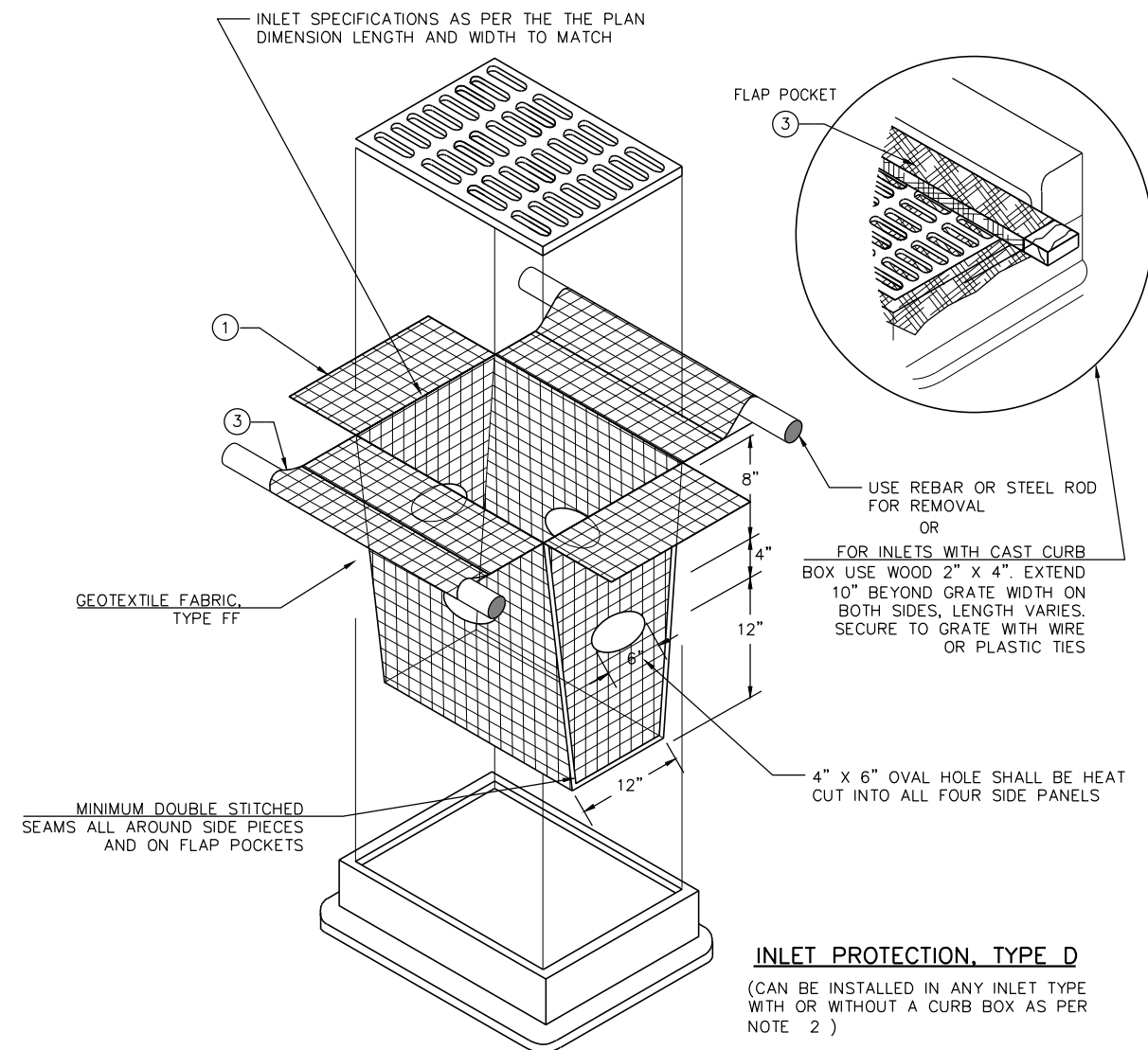
SIEVE SIZE	SIZE NO. AASHTO No. 67
2 INCH (50 mm)	-
1 1/2 INCH (37.5mm)	-
1 INCH (25.0 mm)	100
3/4 INCH (19.0mm)	90-100
3/8 INCH (9.5mm)	20-55
No. 4 (4.75mm)	0-10
No. 8 (2.36mm)	0-5

COURSE AGGREGATE INFORMATION

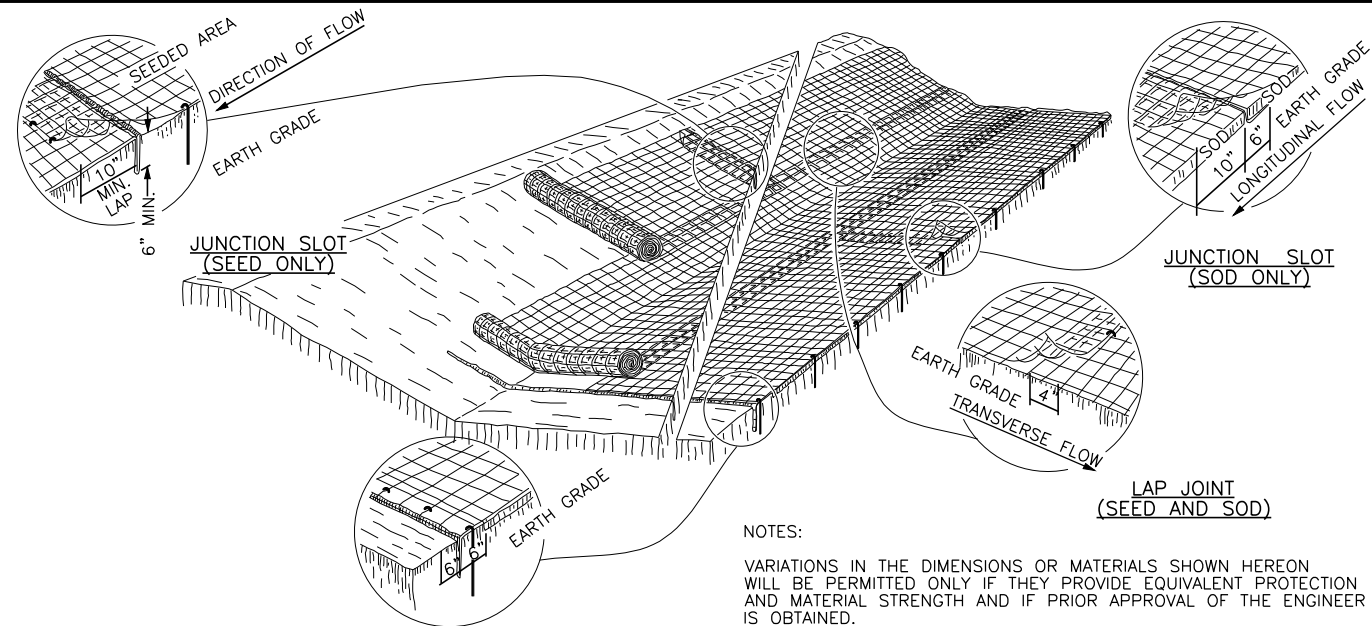
(1) SIZE No. ACCORDING TO AASHTO M 43



ROCK FILLED FILTER BAG



INLET PROTECTION, TYPE D
 (CAN BE INSTALLED IN ANY INLET TYPE WITH OR WITHOUT A CURB BOX AS PER NOTE 2)



NOTES:

VARIATIONS IN THE DIMENSIONS OR MATERIALS SHOWN HEREON WILL BE PERMITTED ONLY IF THEY PROVIDE EQUIVALENT PROTECTION AND MATERIAL STRENGTH AND IF PRIOR APPROVAL OF THE ENGINEER IS OBTAINED.

DO NOT PLACE LAP JOINTS AT THE BOTTOM OF V-SHAPED DITCHES.

JUNCTION SLOTS ON ADJACENT STRIPS OF MATTING WILL BE STAGGERED A MINIMUM OF 4 FEET APART

IMPRESS ALL EDGES OF THE EROSION MAT INTO THE SOIL.

EROSION MAT OVER SOD

ONLY JUTE FABRIC WILL BE PERMITTED OVER SOD

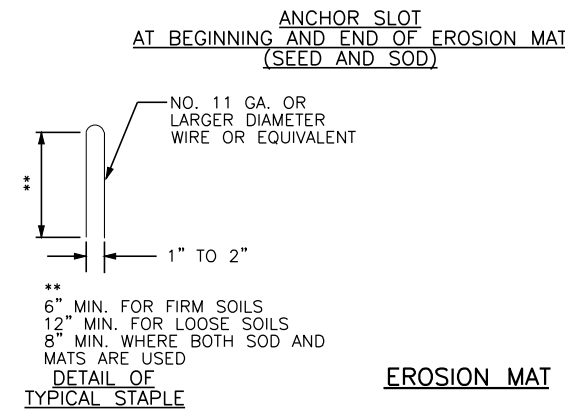
WOOD STAKES FOR SOD MAY BE OMITTED IF THE EXISTING SLOPE AND SOIL CONDITIONS SO WARRANT.

THE WIDTH OF THE EROSION MAT SHALL EQUAL THE SOD WIDTH.

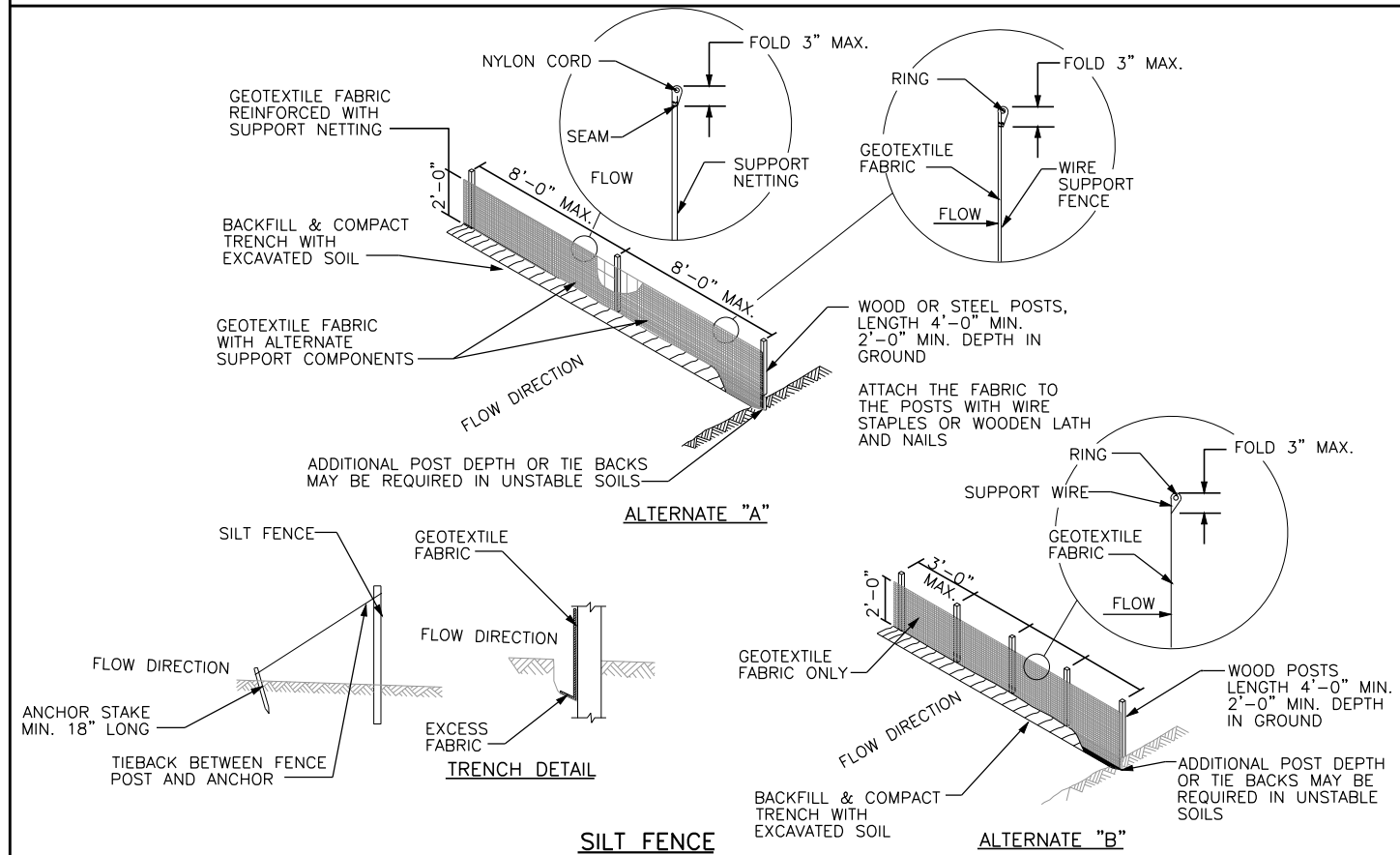
SOD STRIPS MAY BE PLACED EITHER LONGITUDINALLY OR TRANSVERSELY TO THE FLOW LINE OF THE DITCH.

EROSION MAT OVER SEEDING

JUNCTION OR ANCHOR SLOTS WILL BE AT MINIMUM INTERVALS OF 100 FEET ON GRADES UP TO AND INCLUDING 3 PERCENT, AND 50 FEET ON GRADES EXCEEDING 3 PERCENT.



EROSION MAT



SILT FENCE

JOB NO.	04916-0099
BOOK NO.	
DRAWN BY	BJG
CHECKED BY	JJK
DATE	SEPTEMBER 23, 2021
REVISIONS	
REFERENCE FILE	
DRAWING FILE	

www.cedarcorp.com
 800-472-7372

engineers • architects • planners • environmental specialists
 and surveyors • landscape architects • interior designers

Cedar Corporation

2820 Wallon Commons W.
 Suite 142 W. W. 53718
 608-354-0037
 FAX 608-249-5824

1695 Bellevue Street
 53011
 715-235-9081
 920-481-9081
 FAX 920-491-9020
 FAX 715-235-2727

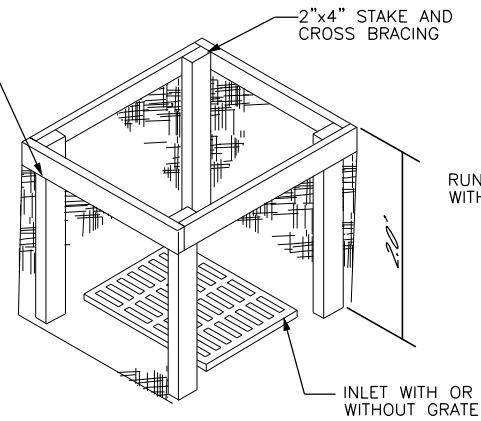
461497 Washington Ave.
 53012
 262-504-2360
 FAX 262-375-2688

TOWN OF BUCHANAN
 N130 CTH N PROPERTY - STORM WATER MANAGEMENT
 CONTRACT NO. B-21
 STANDARD DETAILS

I:\Clients-GfBy\B\B4916 Buchanan Town of\095 N130 CTH N Property - Storm Water Management Feasibility Study\100 Cca\DWG\CoverDetails.dwg 09/23/21 3:16:11 PM

I:\Clients-CRBy\NBA4916 Buchanan Town of\095 N130 CTH N Property - Storm Water Management Feasibility Study\100 Caa\DWG\CoverDetails.dwg 09/23/21 3:16:13 PM

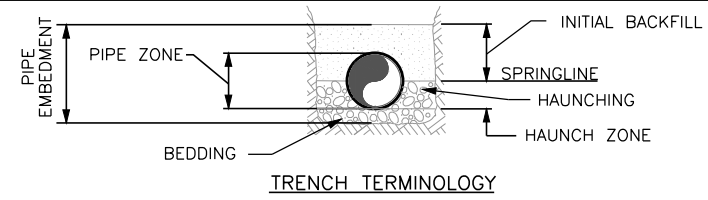
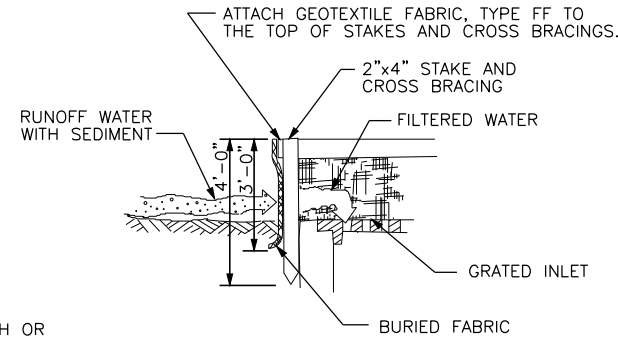
ATTACH GEOTEXTILE FABRIC, TYPE FF TO THE TOP OF STAKES AND CROSS BRACINGS



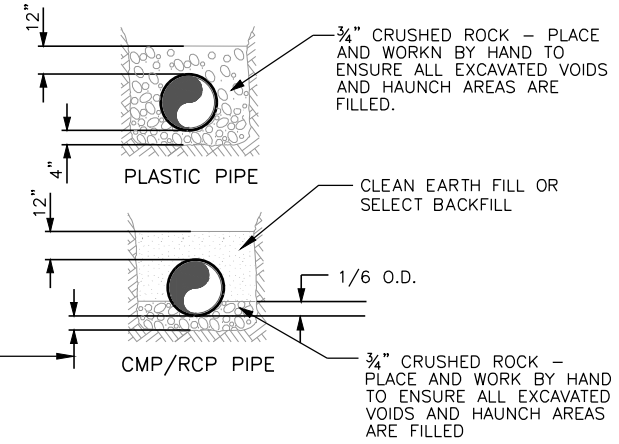
INLET PROTECTION, TYPE A

NOTE:

WHEN REMOVING OR MAINTAINING INLET PROTECTION, TAKE CARE SO THAT THE SEDIMENT TRAPPED ON THE GEOTEXTILE FABRIC DOES NOT FALL INTO THE INLET. REMOVE ANY MATERIAL FALLING INTO THE INLET IMMEDIATELY.



TRENCH TERMINOLOGY



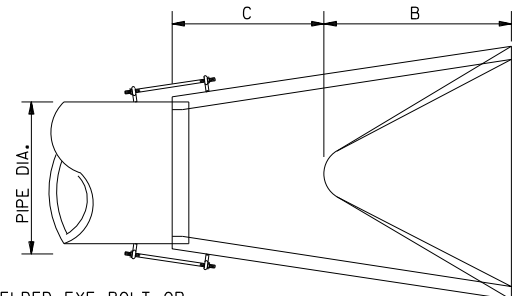
4" OR 1/8 OF O.D. OF PIPE, WHICHEVER IS GREATER

GENERAL NOTES:

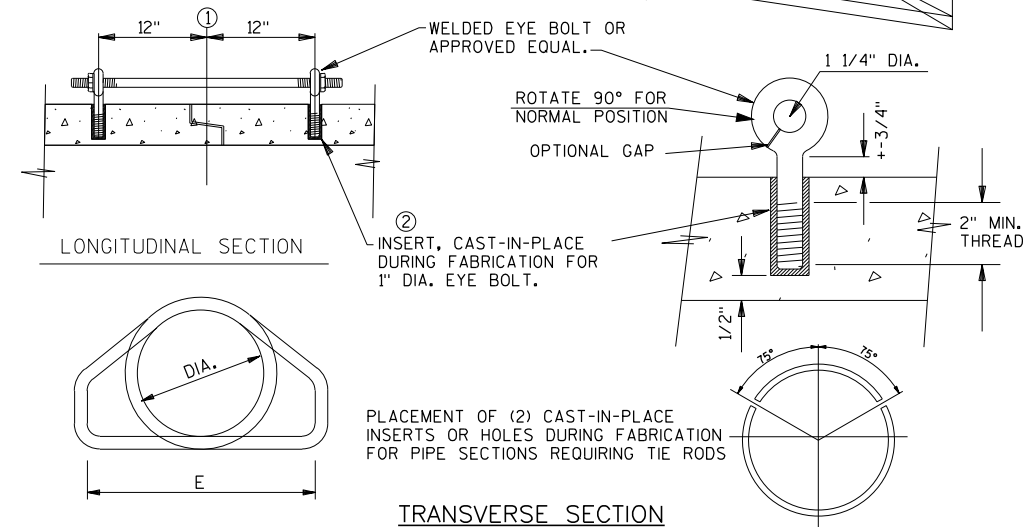
- CLEAN EARTH FILL SHALL BE ANY SOIL MATERIAL EXCAVATED ON THE PROJECT SITE OR OBTAINED FROM BORROW AREAS.
- SELECT BACKFILL SHALL BE USED AS NOTED ELSEWHERE IN THE DRAWINGS.
- SOIL MATERIALS UNSUITABLE AND, THEREFORE, NOT APPROVED FOR THIS CLASSIFICATION ARE:
 - SOILS WITH HIGH ORGANIC CONTENTS SUCH AS: TOPSOIL, PEAT, MUCH, ORGANIC SILTS, AND CLAYS, MARLS, ETC.
 - MANMADE OR RUBBLE FILLED SOILS CONTAINING SUCH MATERIALS AS: FOUNDRY SAND, FLY ASH CINDERS, ASPHALT, AND CONCRETE RUBBLE, ETC.
 - SILTY SOILS SUCH AS: ROCK FOUR, LOESS, ETC.
 - SOILS WITH GRAVEL LARGER THAN 1 1/2 INCH
 - SILTY CLAY OR CLAYS WITH A HIGH PLASTICITY (CH SOILS AS DEFINED IN ASTM D2487).
 - ALL SOIL CONTAMINATED WITH HAZARDOUS WASTE MATERIALS AS DEFINED BY THE EPA.

PIPE EMBEDMENT DETAILS

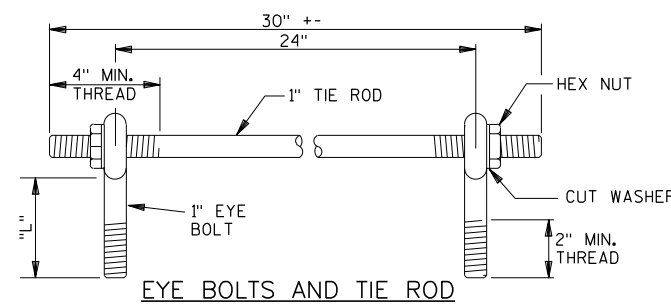
- GENERAL NOTES:**
- JOINT SHALL MATCH JOINT OF ENTERING PIPELINE
 - CLEAN THE INSIDE OF THE THREADED INSERTS TO ALLOW THE INSERTION OF THREADED EYE BOLTS.
 - PLACE OR DRILLED 12" FROM CENTER OF TONGUE AND GROOVE.
 - PROVIDE TIE RODS ON END SECTIONS AND 3 PIPE SECTIONS



PLAN AND SECTIONS



TRANSVERSE SECTION



EYE BOLTS AND TIE ROD

RCP APRON ENDWALL DETAIL

DIA.	A	B	C	D	E	SLOPE
12"	4"	2'-0"	4'-7/8"	6'-7/8"	2'-0"	3:1
15"	6"	2'-3"	3'-10"	6'-1"	2'-6"	3:1
18"	9"	2'-3"	3'-10"	6'-1"	3'-0"	3:1
21"	9"	3'-0"	3'-1 1/2"	6'-1 1/2"	3'-6"	3:1
24"	9 1/2"	3'-7 1/2"	2'-6"	6'-1 1/2"	4'-0"	3:1
27"	10 1/2"	4'-1 1/2"	2'-0"	6'-1 1/2"	4'-6"	3:1
30"	12"	4'-6"	1'-7 3/4"	6'-1 1/2"	5'-0"	3:1
36"	15"	5'-3"	2'-10 3/4"	8'-1 3/4"	6'-0"	3:1
42"	21"	5'-3"	2'-11"	8'-2"	6'-6"	3:1
48"	24"	6'-0"	2'-2"	8'-2"	7'-0"	3:1
54"	27"	5'-5"	2'-9 1/4"	8'-2 1/4"	7'-6"	2 2/5:1
60"	30"	5'-0"	3'-3"	8'-3"	8'-0"	2:1

GENERAL DIMENSIONS

PIPE SIZE	L = LENGTH	
	TONGUE & GROOVE PIPE	MODIFIED BELL PIPE
18" TO 24"	4 1/2"	6 1/4"
30"	5"	7"
36"	5 1/2"	7"
42"	6"	
48"	6 1/2"	
60"	7 1/2"	
66"	8"	

EYE BOLT DIMENSION TABLE

JOB NO. 04916-0099
BOOK NO.
DRAWN BY BJC
CHECKED BY JJK
DATE SEPTEMBER 23, 2021
REVISIONS
REFERENCE FILE
DRAWING FILE

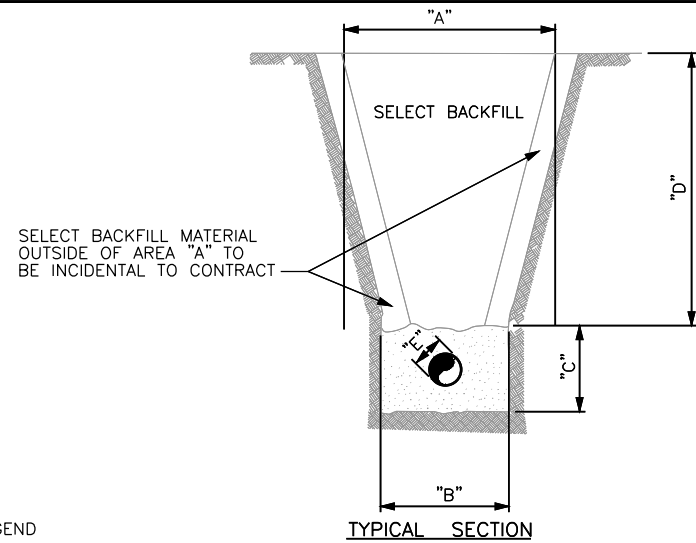
www.cedarcorp.com
800-472-7372

Cedar Corporation
engineers • architects • planners • environmental specialists
and surveyors • landscape architects • interior designers

2820 Wallon Commons W.
Suite 142 W. 53718
608-354-0377
FAX 608-249-5824

1695 Bellevue Street
G04 Wilson Ave. 54751
920-481-9081
715-235-9081
FAX 920-481-9020
FAX 715-235-2727

TOWN OF BUCHANAN
N130 CTH N PROPERTY - STORM WATER MANAGEMENT
CONTRACT NO. B-21
STANDARD DETAILS



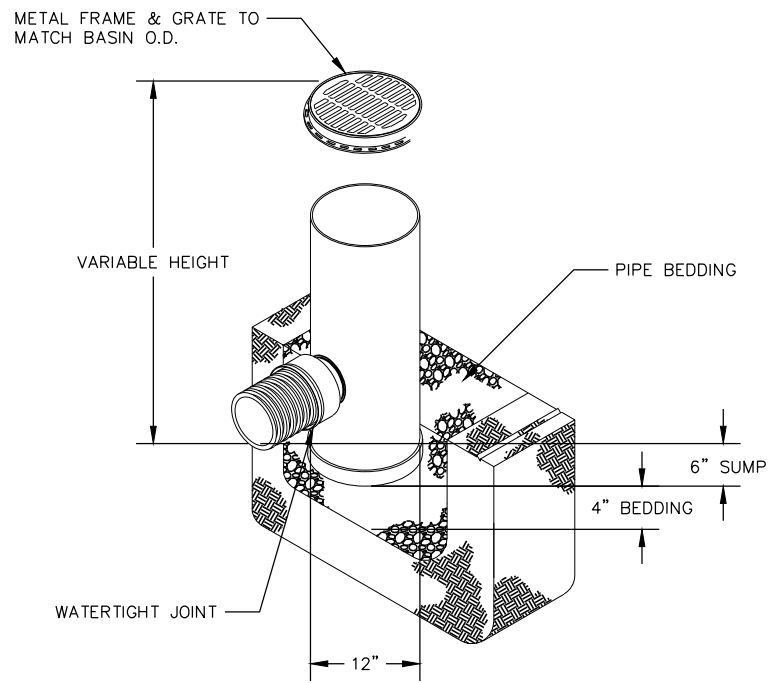
LEGEND

- "A" - THEORETICAL TRENCH WIDTH FOR CALCULATING SELECT BACKFILL FOR PAYMENT:
- "A" WILL BE PIPE OUTSIDE DIAMETER PLUS 24 INCHES OR EQUAL TO "D", WHICHEVER NUMBER IS GREATER.
- "B" - WIDTH TO ONE FOOT ABOVE THE TOP OF PIPE, OUTSIDE DIAMETER PLUS 24 INCHES (MAXIMUM)
- "C" - BEDDING AND COVER MATERIAL (INCIDENTAL TO PIPE INSTALLATION)
- "D" - TRENCH DEPTH
- "E" - OUTSIDE DIAMETER OF PIPE

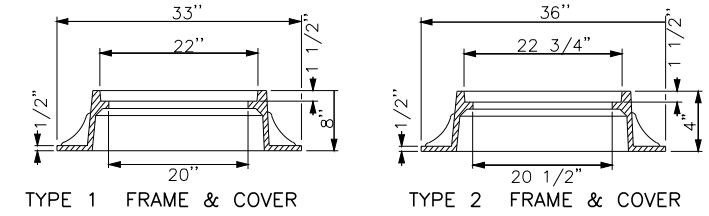
NOTES:

THIS DETAIL IS NOT A RESTRICTION OF ACTUAL TOP OF TRENCH, BUT IS USED TO DETERMINE THE QUANTITY OF SELECT BACKFILL MATERIAL.
 BACKFILL OUTSIDE LIMITS SHOWN WILL BE INCIDENTAL TO PIPE INSTALLATION.

SELECT BACKFILL COMPUTATION DETAIL

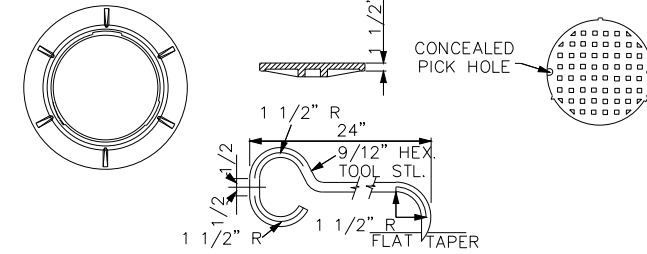


PVC YARD DRAIN
NO SCALE



TYPE 1 FRAME & COVER
MINIMUM WT. 285 LBS.
NEENAH R-1500 OR EQUAL

TYPE 2 FRAME & COVER
MINIMUM WT. 280 LBS
NEENAH R-1689 OR EQUAL

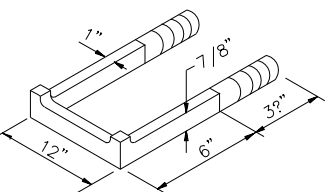
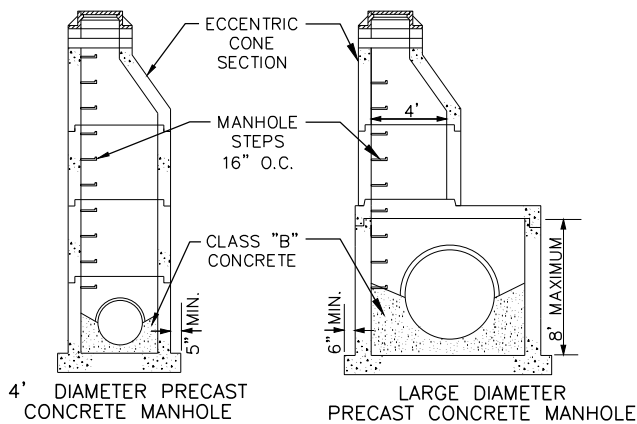


COVER REMOVING TOOL
FOR CONCEALED PICKHOLE

NOTES:

- ALL COVERS SHALL BE SELF-SEALING WITH GASKET.
- FRAME AND COVER SHALL BE MACHINED AND FITTED SO THAT ROCKING AND CHATTERING WILL BE ELIMINATED.
- WHEN MANHOLE ADJUSTMENT IS LIMITED, PROVIDE TYPE 2 FRAME
- FRAME WEIGHT INCLUDES COVER
- FURNISH ONE COVER REMOVING TOOL FOR CONCEALED PICKHOLE COVERS WITH EACH ORDER OF 20 COVERS OR FRACTION THERE OF.

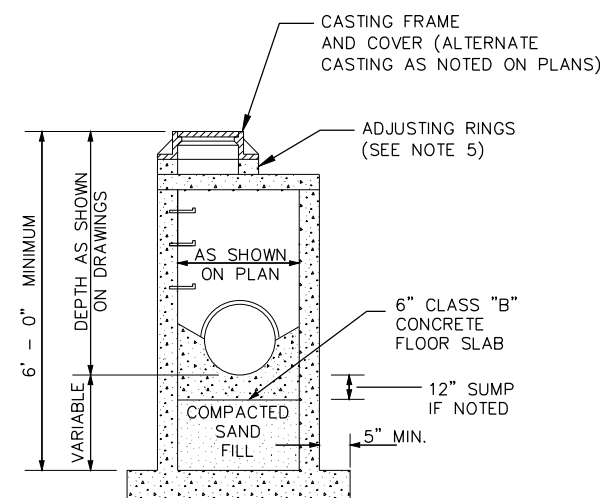
FRAME & COVER DETAIL



BASE SLAB OVERHANG DESIGNED FOR 25" MAXIMUM DEPTH
 PRECAST CONCRETE BASE SHALL BE CAST MONOLITHIC WITH BARREL SECTION

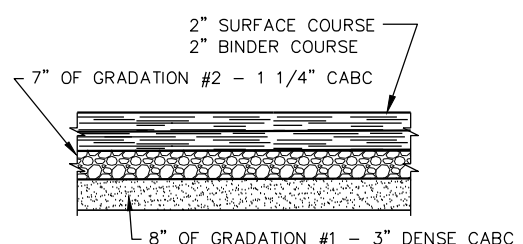
	MAX. PIPE I.D. STRAIGHT THRU TO 45° DEFLECTION	MAX. PIPE I.D. 90° DEFLECTION
4' MANHOLE	18"	18"
5' MANHOLE	30"	27"
6' MANHOLE	42"	30"
8' MANHOLE	54"	42"
9' MANHOLE	66"	54"

STRUCTURE: PRECAST MANHOLE DETAIL



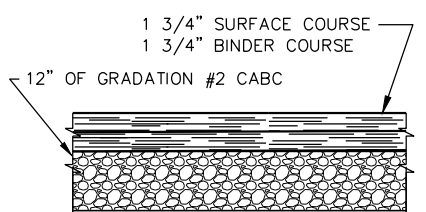
- NOTES:**
1. BASE SHALL BE CAST MONOLITHIC WITH BARREL SECTION
 2. PIPE SHALL ENTER BARREL THROUGH A FLEXIBLE WATERTIGHT GASKET CONFORMING TO ASTM C443 OR C923
 3. BARREL SECTION SHALL BE ONE PIECE
 4. USE THIS MANHOLE ON ANY GRAVITY SEWER LINES LESS THAN SIX FEET DEEP
 5. THE FINAL ADJUSTMENT RING TO BE A 2" RECYCLED RUBBER RING FOR MANHOLES WITHIN THE ROAD SECTION.
 6. USE CASTING NEENAH INLET CASTING R-3501-P WHERE NOTED ON PLANS.

TYPE "S" MANHOLE DETAIL

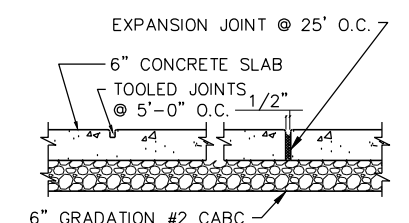


YARD WASTE ASPHALT PAVEMENT TYPICAL SECTION

NOTE: 1" OF BASE COURSE REQUIRED OUTSIDE ASPHALT PAVEMENT LIMITS

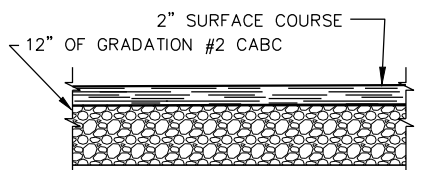


RUBY COURT ASPHALT PATCHING TYPICAL SECTION



6" CONC. DRIVEWAY

NOTE: USE 1/2" FELT JOINT WHERE CONCRETE MEETS BUILDING



RESIDENTIAL ASPHALT DRIVEWAY TYPICAL SECTION

NOTE: CURB BOXES LOCATED IN CONCRETE DRIVEWAYS OR PAVEMENT SHALL BE ENCASED INSIDE OF A 4" PVC SLEEVE.

I:\Clients--GrBoy\B\B4916 Buchanan Town of\095 N130 CTH N Property - Storm Water Management Feasibility Study\100 Cca\DWG\CoverDetails.dwg 09/23/21 3:16:18 PM

JOB NO. 04916-0099
BOOK NO.
DRAWN BY BJC
CHECKED BY JKK
DATE SEPTEMBER 23, 2021
REVISIONS
REFERENCE FILE
DRAWING FILE

www.cedarcorp.com
800-472-7372

engineers • architects • planners • environmental specialists
and surveyors • landscape architects • interior designers

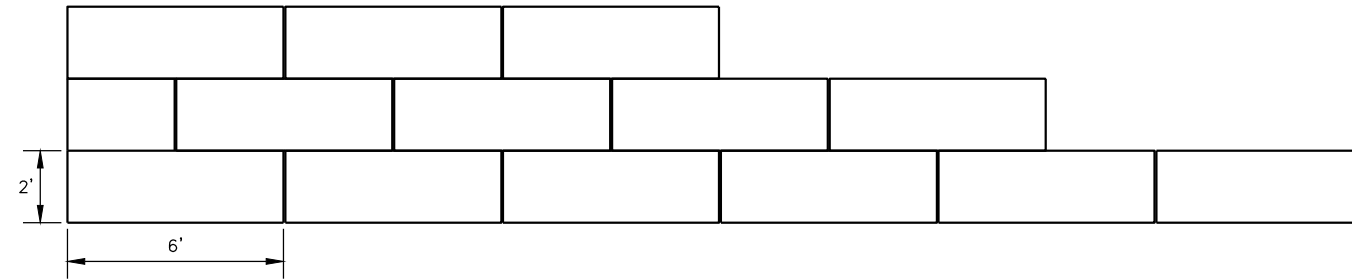
Cedar Corporation

2820 Walton Commons W.
Suite 142
Waukesha, WI 53178
608-354-0037
FAX 608-249-5824

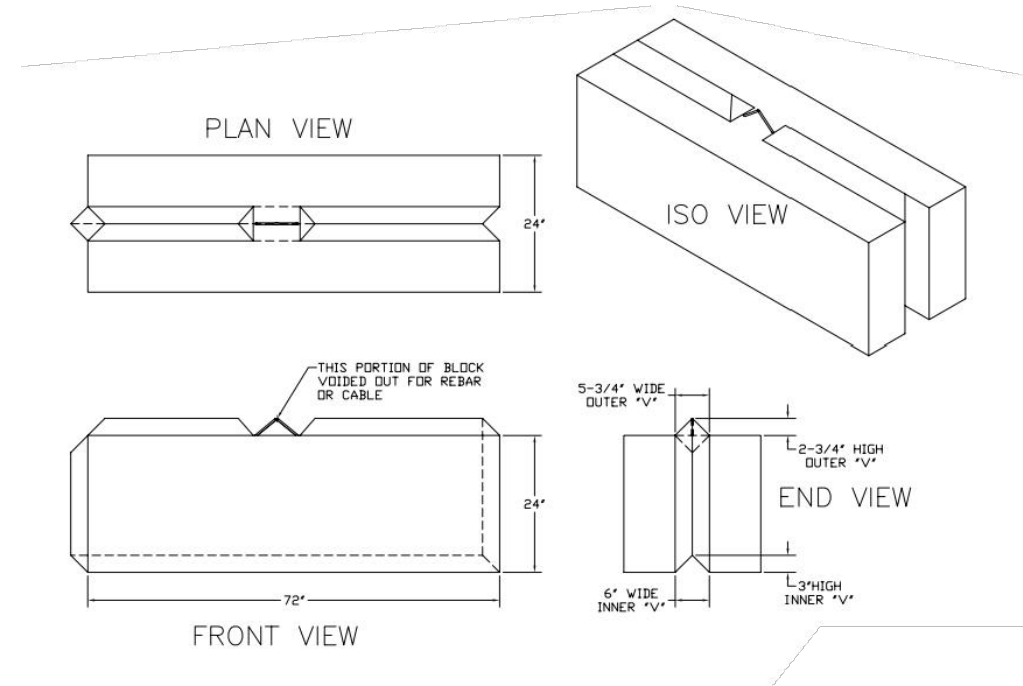
1695 Bellevue Street
G04 Wilson Ave.
Waukegan, IL 60087
815-235-9081
815-235-9081
FAX 815-235-2727

TOWN OF BUCHANAN
N130 CTH N PROPERTY - STORM WATER MANAGEMENT
CONTRACT NO. B-21
STANDARD DETAILS

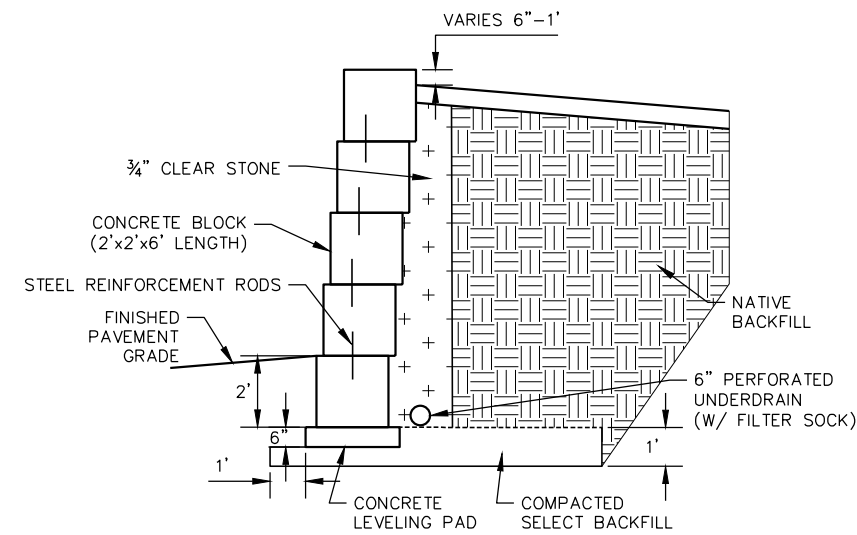
I:\Clients-CR\Boys\B4916 Buchanan Town of\095 N130 CTH N Property - Storm Water Management Feasibility Study\100 Cca\DWG\CoverDetails.dwg 09/23/21 3:16:23 PM



CONCRETE BLOCK RETAINING WALL - SIDE VIEW



6' CONCRETE BLOCK



CONCRETE BLOCK RETAINING WALL
* FRONT FACE WALL OF CONCRETE BLOCKS TO BE STAGGERED.

JOB NO. 04916-0099
BOOK NO.
DRAWN BY BJC
CHECKED BY JJK
DATE SEPTEMBER 23, 2021
REVISIONS
REFERENCE FILE
DRAWING FILE

www.cedarcorp.com
800-472-7372

engineers • architects • planners • environmental specialists
and surveyors • landscape architects • interior designers

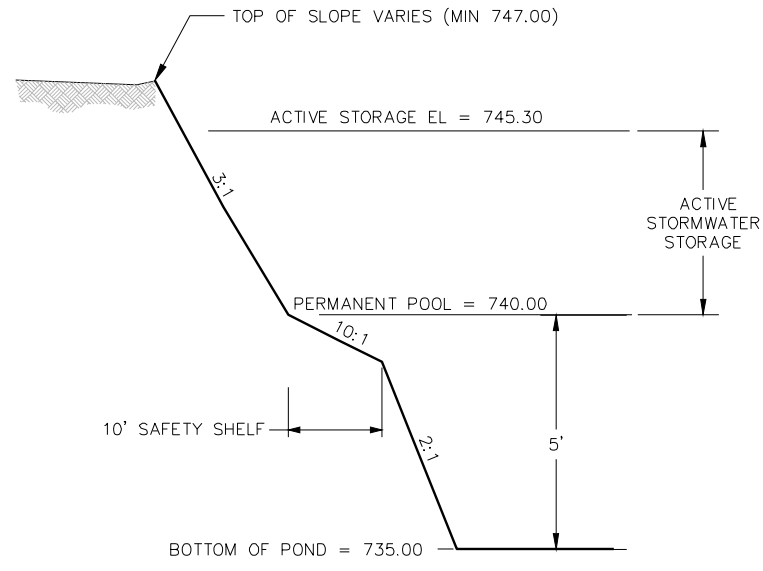
Cedar Corporation

2820 Wallon Commons W.
Suite 142 W. 53718
608-354-0037
FAX 608-249-5824

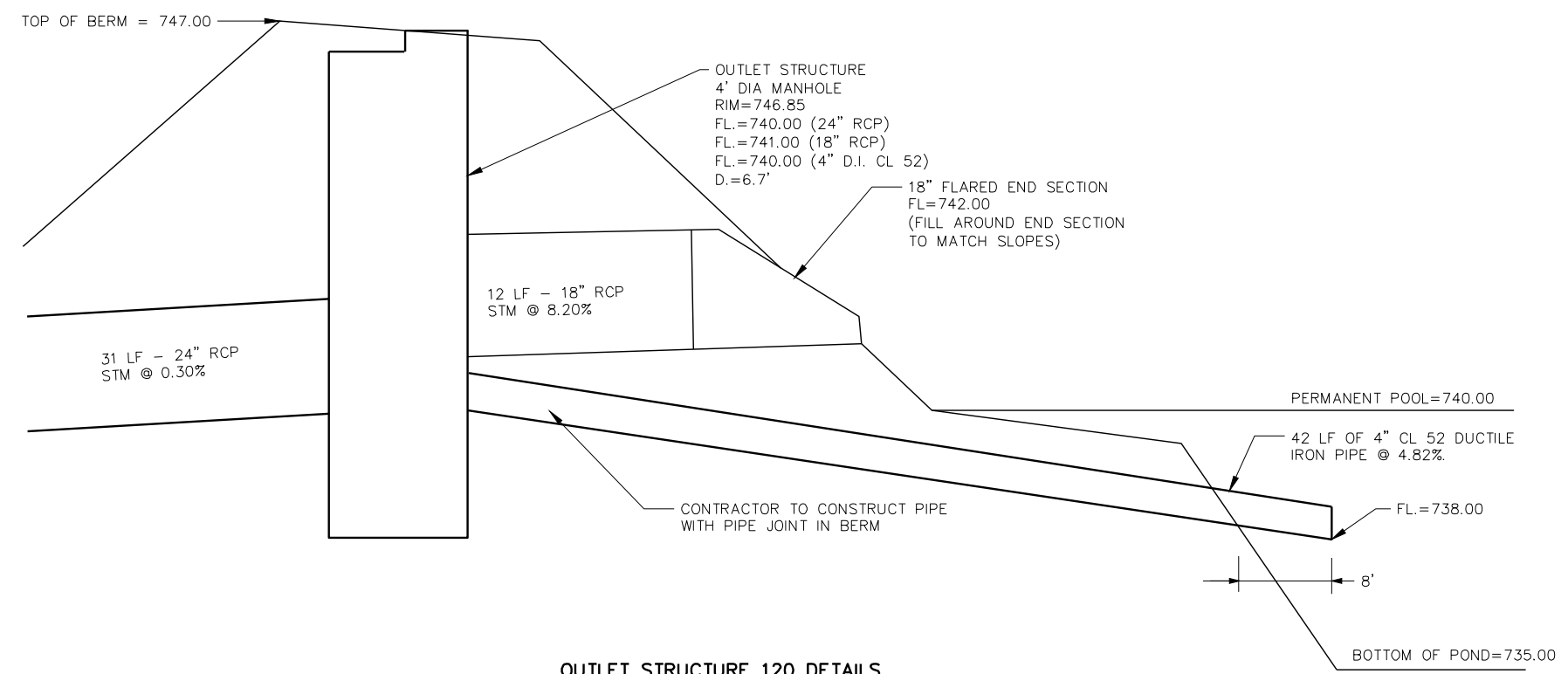
1695 Bellevue Street
G04 Wilson Ave. 54751
920-481-9081
715-235-9081
FAX 920-491-9020
FAX 715-235-2727

TOWN OF BUCHANAN
N130 CTH N PROPERTY - STORM WATER MANAGEMENT
CONTRACT NO. B-21
STANDARD DETAILS

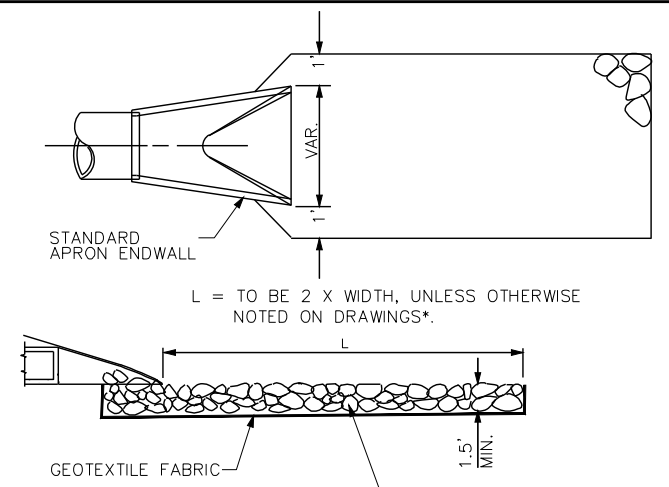
I:\Clients-CR\Boyer\B4916 Buchanan Town of\095 N130 CTH N Property - Storm Water Management Feasibility Study\100 Cda\DWG\CoverDetails.dwg 09/23/21 6:29:07 PM



WET DETENTION POND

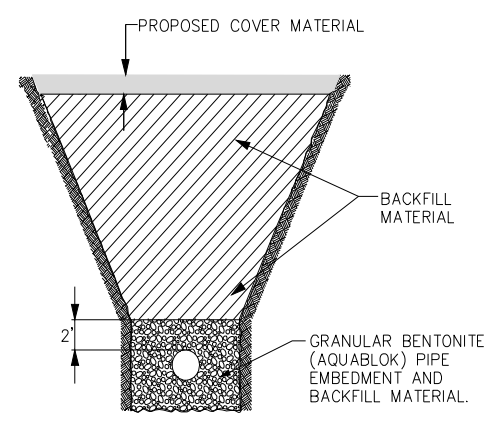


OUTLET STRUCTURE 120 DETAILS



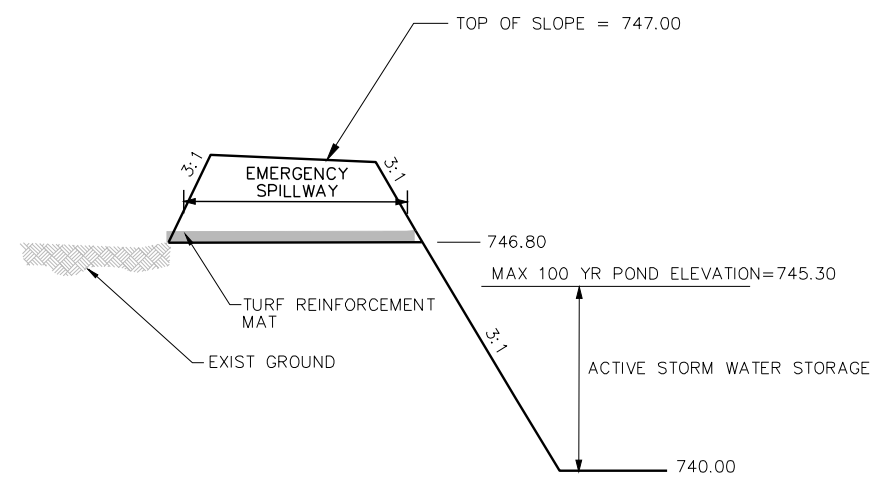
- NOTES:**
1. INLET PIPES TO POND SHALL GET RIP RAP ON SAFETY SHELF AND DOWN SLOPE TO BOTTOM OF POND.
 2. LAST 3 PIPE JOINTS SHALL BE TIED PER SPECIFICATIONS.

RIPRAP DETAIL

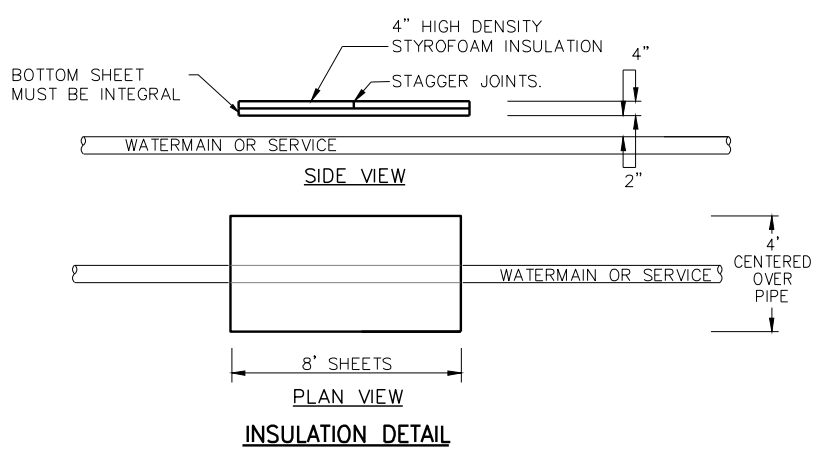


- GENERAL NOTES:**
1. LENGTH ALONG PIPE IS 3 FEET
 2. COMPACT AROUND PIPE TO ELIMINATE VOIDS
 3. MINIMUM 6' WIDE

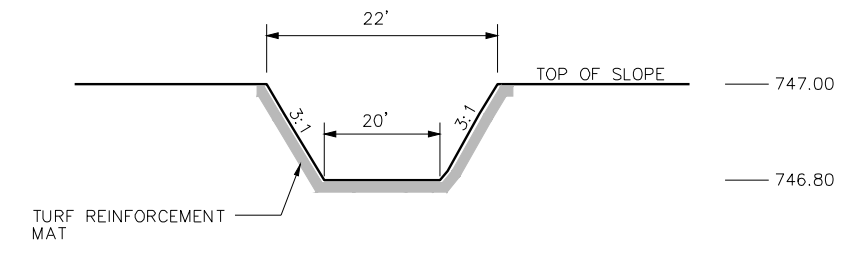
CLAY DAM



EMERGENCY SPILL WAY SECTION



INSULATION DETAIL



EMERGENCY SPILL WAY DETAIL

JOB NO. 04916-0099
BOOK NO.
DRAWN BY BJC
CHECKED BY JKK
DATE SEPTEMBER 23, 2021
REVISIONS
REFERENCE FILE
DRAWING FILE

www.cedarcorp.com
800-472-7372

engineers • architects • planners • environmental specialists
and surveyors • landscape architects • interior designers

Cedar Corporation

2820 Walton Commons W.
Suite 142 M. 63718
608-554-0337
FAX 608-249-5824

1695 Bellevue Street
Suite 301
920-491-9081
FAX 920-491-9020

604 Wilson Ave. #4751
715-235-9081
FAX 715-235-7277

TOWN OF BUCHANAN
N130 CTH N PROPERTY - STORM WATER MANAGEMENT
CONTRACT NO. B-21
STANDARD DETAILS